



CONFERENCE CHAMPS — Here is Chelsea High's 1960 football squad, Washtenaw Conference champions for the second consecutive year. These Bulldogs clinched the title by defeating Saline 39-0 last night at Saline. In the squad were 15 seniors who played their final football game Friday for Chelsea.

High. Shown in the photo, from left in the back row, are Coach Alan Conklin, Tom Eisenbeiser, Dagley Holmes, Robert Riemenschneider, Don Sexton, Tom Brooks, Don Wilson, Stan Hand, Paul Schramm and Line Coach Truman O'Doherty. In the middle row, from left, are Al Schauer, Larry Kramer, Ken Larson, Dave McLaughlin, Mike Marsh, Jim Maynard, Don Blalock, Daryl Keezer and Tom Dunlap. Those in the front row, from left, are Dan Ellenwood, Richie Wood, Alton Nixon, Co-Captains Jerry Ringer and Dan Mayer, Homer Nixon, Charles Waller and Ed Lauhon. \*Seniors.

# Bulldogs Defeat Saline For 2nd Consecutive Conference Grid Title

## Complete Second Year Without Conference Defeat

The Chelsea Bulldogs are the champions of the Washtenaw Conference for the second consecutive year following last Friday's defeat of Saline.

In claiming their second consecutive title the Bulldogs rolled over six successive conference foes, outscoring them 197-41.

Chelsea now has gone 12 consecutive games over a two-year span without a conference defeat.

The Bulldogs showed in the Saline game that they weren't about to share the championship crown as they scored the first time they had possession of the ball.

Saline's short kick-off was taken on the Chelsea 48, and the Bulldogs marched downfield to the 20-yard line. At this point Quarterback Ed Lauhon rolled out to his right and raced 20 yards for the touchdown. The extra point attempt was not good.

The second time they had the ball the Bulldogs marched 65 yards

FINAL WASHTENAW CONFERENCE STANDINGS		
CHelsea	W	L
U. High	6	0
Dexter	4	2
Saline	3	3
Roosevelt	2	4
Manchester	1	5
Pinekey	0	6

for the T. D. in five plays. The big gainer was a 30-yard dash by Halfback Dan Blalock to the 30-yard line. Two plays later Lauhon dropped back behind excellent protection and hit Daryl Keezer with a 15 yard pass and Keezer scampered into pay dirt. Again the extra point failed.

Score at the end of the first quarter was Chelsea 12, Saline 0.

In the second period the Bulldogs marched 85 yards for the T. D. Lauhon alternated his backs, Dave McLaughlin, Blalock and Keezer through good holes and a pass from Lauhon to Homer Nixon also picked up good yardage. The scoring play went to Blalock as he took a pitch-out and went around his own left end to score. Lauhon passed to Homer Nixon for the extra point to make the score at half time read Chelsea 19, Saline 0.

In the second half Coach Al Conklin used an underclass unit and a Senior unit. The underclass unit scored first as Dave McLaughlin broke away on a 50-yard dash to place the ball on the one-yard line. Halfback Al Schauer scored over blocks by Paul Schramm, Stan Hand and Larry Cattell. Quarterback Daryl Keezer scored the extra point behind blocking by Don Wilson and Tom Eisenbeiser.

The Seniors then added two more scores. Senior Fullback Tom Dunlap returned a punt for 55 yards and then Chelsea moved into score with Left Halfback Daryl Keezer going the extra 10 yards behind blocking by Alton Nixon, Dan Ellenwood and Mike Marsh. Blalock (Continued on page three)

WEATHER		
Friday, Nov. 10	38	51 Trace
Saturday, Nov. 11	38	51 Trace
Sunday, Nov. 12	34	48 0.02
Monday, Nov. 13	31	41 0.02
Tuesday, Nov. 14	24	44 Trace
Wednesday, Nov. 15	29	40 0.14

# The Chelsea Standard

QUOTE  
Men heap together the mistakes of their lives, and create a monster they call Destiny.  
—John Oliver Hobbes

ETIETH YEAR—No. 19 12 Pages This Week CHELSEA, MICHIGAN, THURSDAY, NOVEMBER 10, 1960 10c per Copy SUBSCRIPTION \$3.00 PER YEAR

# KENNEDY ELECTED IN CLOSE NATIONAL RACE

## Residents Invited to Help Push for Free Dexter Calls

### Dexter C. of C. Fishing Drive Eliminate Toll

Chelsea Village Council has a resolution requesting the Bell Telephone Co. for a toll-free telephone service between Chelsea and Dexter. The resolution was passed at the Nov. 8 meeting.

Business groups and other organizations in the Chelsea-Dexter area have been discussing the toll-free service between the communities at their meetings for more than two years and at various times appointed committees to approach the telephone company in an effort to obtain the plan.

Dexter Chamber of Commerce at several recent meetings discussed the situation at some length and Nicholas Prakken, manager of the Ann Arbor office, was to attend the October meeting of that organization.

At that meeting, Prakken said, he would require at least 30 complete surveys of existing toll-free service in the communities. He said that at the end of that time he would be able to answer the question.

It has been set as the date of the Dexter Chamber of Commerce meeting and Prakken has assured the C. of C. president, G. Hoey, that he will be present.

Chelsea and Dexter telephone customers have indicated approval of the Dexter Chamber of Commerce and a number of organizations in the Chelsea area voted to attend the Nov. 22 meeting in a body to lend their support.

Organizations have appointed committees to represent at the meeting which is open to anyone interested.

The October meeting, Prakken said, he responded to the question of present toll-free service between Pinckney and Dexter by saying that Pinckney rather than Chelsea was one of the mutual community areas.

Prakken was later questioned fully and stated that facilities for the Michigan Bell had been readily available to furnish toll-free service between Dexter and Pinckney.

However, President Leo Hoey related that service had been available.

### Chest Fund Collections Lag at 83%

With Chelsea Community Chest individual reports believed to be approximately 85 per cent complete, only 83 per cent of the 1961 goal of \$15,237 has been paid or pledged, according to a report prepared by Chest officials yesterday.

The total amount paid or pledged at this time is \$12,740.

All categories, with the exception of schools, are still incomplete but it is feared the final tabulation will show that the goal will be short from \$1,500 to \$2,000 unless some unforeseen donations are made between now and next week.

Current unemployment is believed to be one of the principal factors involved in failure to reach the specified amount. Factory workers have been notably generous in supporting the Chest campaigns when employment was normal.

Categories listed, together with present totals in each, are: industry, \$8,200; business, \$2,315; \$435; rural, \$550; and residential, \$1,120.



CHARRED WRECKAGE in a cornfield on the John O'Connor farm five miles northwest of Chelsea, is all that remains of a one-engine plane which crashed during a snow squall Sunday afternoon.

The pilot, identified seven hours later as Keith L. Scheiern of Belding, was burned to death. He was the father of five small children.

## Belding Resident Dies in Fiery Plane Crash Sunday

Keith L. Scheiern, 37, of Belding, died Sunday afternoon in the fiery wreckage of a light plane which crashed on the John O'Connor farm, 17113 Roe Rd., about five miles northwest of Chelsea, during a snow squall.

Scheiern, 33 years old and the father of five small children, had taken off at Monroe at 2:30 p.m. Less than an hour later Mrs. John O'Connor heard his plane apparently circling overhead, at the O'Connor farm. A moment later she heard the motor stop and then a thud as the plane struck the ground.

Because of the snow falling at the time, Mrs. O'Connor had been unable to see the plane, but, rushing to the window after hearing the noise of its striking the ground, she saw it had landed approximately 80 rods south of the house in a corn field behind the barn and had burst into flames. Her husband was the first to reach the scene.

Mrs. O'Connor notified the Sheriff's Department at once and the Chelsea Fire Department rushed to the scene.

The wreckage was twisted and bent and acetylene torches had to be used before the charred body of the pilot could be removed.

It was seven hours before identification of the body was verified. According to information placed

## Massachusetts Senator Wins Most Large Cities To Gain Electoral Vote

### Close Popular Vote Keeps Decision in Doubt

Republican Vice-President Richard M. Nixon conceded the presidential election to the Democratic candidate, Senator John F. Kennedy, shortly before one o'clock Wednesday afternoon in a telegram sent to Kennedy.

About an hour later, Kennedy appeared on television at Boston, together with members of his family.

Nixon and his wife had appeared briefly on television in California about 3 a.m. At that time Nixon thanked all who had supported him in the campaign and said that "if the present trend (of vote tabulation) continued Mr. Kennedy will be the next president of the United States."

The popular vote, as reported throughout the night from the various states continued on an approximate 51-49 per cent basis in favor of the Democratic candidate. As the different states went for one or the other of the candidates, the electoral votes credited to Kennedy by 3 a.m. amounted to 264, only five less than the required 269 needed for election.

The trend continued until late Wednesday morning when Kennedy had carried 24 states and was credited with a verified 272 electoral votes and an additional 82 "probable" for a total of 354.

At that time Nixon had carried 12 states for a total of 189 electoral votes.

Lieutenant Governor John B. Swainson is Michigan's new Democratic governor. He had a majority of well over 40,000 yesterday afternoon when his count stood at 1,638,481 to Republican Paul Bagwell's 1,597,453.

Other state offices also went to the Democratic candidates and Democrat Patrick McNamara won re-election as U.S. Senator.

### Nixon Wins Mock Election at Junior High

There was a mock election at the Junior High school Tuesday with all seventh and eighth grade students voting. They gave speeches in their history class, section 8-A. Tom Sharrard as Senator Kennedy and George Gary as Vice-President Nixon made speeches. The results of the election were 171 votes for Nixon and 77 votes for Kennedy.



President-Elect John Fitzgerald Kennedy

ey, Jr., received big majorities in Washtenaw county in the non-partisan race for the State Supreme Court but lost the election in the state to the incumbent, Theodore Souris.

In Washtenaw county, all Republicans were successful. County Clerk Luella Smith, County Treasurer William Verner, Drain Commissioner John Flook and County Surveyor Herbert Hicks each receiving well over 30,000 votes.

Sheriff George A. Petersen polled a majority of 9,700 votes to win re-election on the Republican ticket. Petersen had 36,654 votes, while the Democratic candidate, Lawrence Olsterdorf, received 26,914.

In Scio township, the liquor-by-the-glass issue was defeated by a vote of 1,239 "no" to 1,117 "yes."

In common with the rest of the state, Washtenaw county approved all three proposals on the ballot.

Several townships in this area, included scattering votes for candidates on the Socialist Workers, Socialist Labor, Tax Cut, Prohibition and Independent American party tickets.

### Hunter's Ball Planned By American Legion

Herbert J. McKune Post No. 31, has completed plans for a "Hunter's Ball" to be held at the Legion Home at Cavanaugh Lake Saturday.

Members and their guests are invited to attend dressed in clothes appropriate for the hunting season or in general informal attire.

The dance is scheduled for 8 p.m. until 2 a.m.



Literature, including test strips, will be available free throughout the week. In Chelsea the American Diabetes Association has arranged to place the material at Chelsea

## PURE OIL PRODUCTS

**TIRES - BATTERIES - TUNE-UPS - BRAKE SERVICE**  
**PHONE GR 5-7411 CHELSEA, MICH.**

**JOHN W. STEELE**  
SHEET METAL  
Garfield—Chelsea, Mich. Ph. GR 9-445

Hunting clothes or other informal attire in keeping with the hunting season will be appropriate. Admission will be by Hunters' Ball tickets available at the door. A buffet lunch will be served and a gala time anticipated for all attending. Make up a party and come hunting for an evening of fun.

**6 DIAMOND DUET**  
Shimmering magic  
in a brilliant setting  
from our large  
selection

**102-East Middle St. Ph. GR 9-6721**

**MYSTERY FARM NO. 123** — Several distinguishing features should make identification of Mystery Farm No. 124 not too difficult. If you know where this farm is located and who owns it, please call The Standard office at once. GR 5-3581. This is one of the current series of farm photos published without identification. We do not know where it is or who it is the owner of. If you are a reader who can recognize it and tell us, The owner is entitled to a mounted photo of the farm, free of charge, if he will call at The Standard office by Saturday.

Wednesday, Nov. 16--  
8:00 p.m.—Sunday school teachers meeting.

**Tickets: \$1**

**50 and \$2.50**

\_\_\_\_\_

21

11-11-68

31



## Women Take Charge of Sunday Fellowship Services

Today was designated as the Women's Fellowship Sunday at the Congregational church and services of the church were in charge of the entire Sunday morning service.

The sermon topic, "Ways We Can Live For Christ," was presented in three parts by Mrs. Lee Ferguson, Mrs. John Hale and Mrs. Walter Wolfgang.

Others who participated are Mrs. Lewis Bernath who led the responsive reading; Mrs. Walter Pielmeier who read the Old Testament lesson and presided during the offertory; Mrs. David Bosh who read the New Testament lesson; and Mrs. D. R. Hoppe who read the pastoral prayer.

Ushers for the service included Mrs. Harold Brooks, Mrs. Clarence Vogel and Mrs. L. Philip Vogel. The "Women's Fellowship Sunday" program was planned by a committee of women including Mrs. Lee Ferguson, Mrs. Vernon Parks and Mrs. Max Hepburn.

## STOCKBRIDGE INN

WE INVITE YOU TO ENJOY OUR RELISH TABLE WITH ALL DINNERS

OUR SPECIALTY IS STEAK FROM OUR GRILLE

This is flavor-fed beef from Story Book Farm. It is locally raised and prepared for shipment to all parts of the United States. The meat is corn fed and no chemicals or hormones are added to their diet. This beef may be bought for your home freezer, cut to order, and we can furnish you with full information.

10% off on all service checks of \$5 or more

WE ALSO CATER TO PRIVATE PARTIES, CLUBS, ETC.

**DAN SEXTON, Proprietor**

Phone Ulysses 1-2763

**IN CHELSEA**  
SORENSEN SUBDIVISION  
On Arthur, Lane, Wilkinson and Wellington

★ OIL, HEAT

★ 60-FT. LOTS

★ 3 BEDROOMS

★ SPACIOUS RMS.

★ GOOD SCHOOLS

For a small down payment and easier than rent monthly payments you can enjoy real living in a three bedroom home on a large 60 ft. lot, ECONOMICALLY heated by oil. These homes offer all city conveniences. Your children will enjoy good schools and fine playmates. And you'll find the pleasure of the recreational activities in the area. Easy driving distance to Ann Arbor or Jackson for shopping or work. You will like these homes easy to keep clean homes with large dining room and efficient kitchens. Drive over today and see the finished model at \$19,900, just off Old U. S. 12 and west of M-92. These homes are sold on a low down payment, FHA terms, Trade in possibilities. Phone GR 8448 or AC 9-6045. BROKER.

**SEE IT TODAY!  
MOVE IN TOMORROW!**

## Recognize the BARGAIN-HUNTING SAPSUCKER

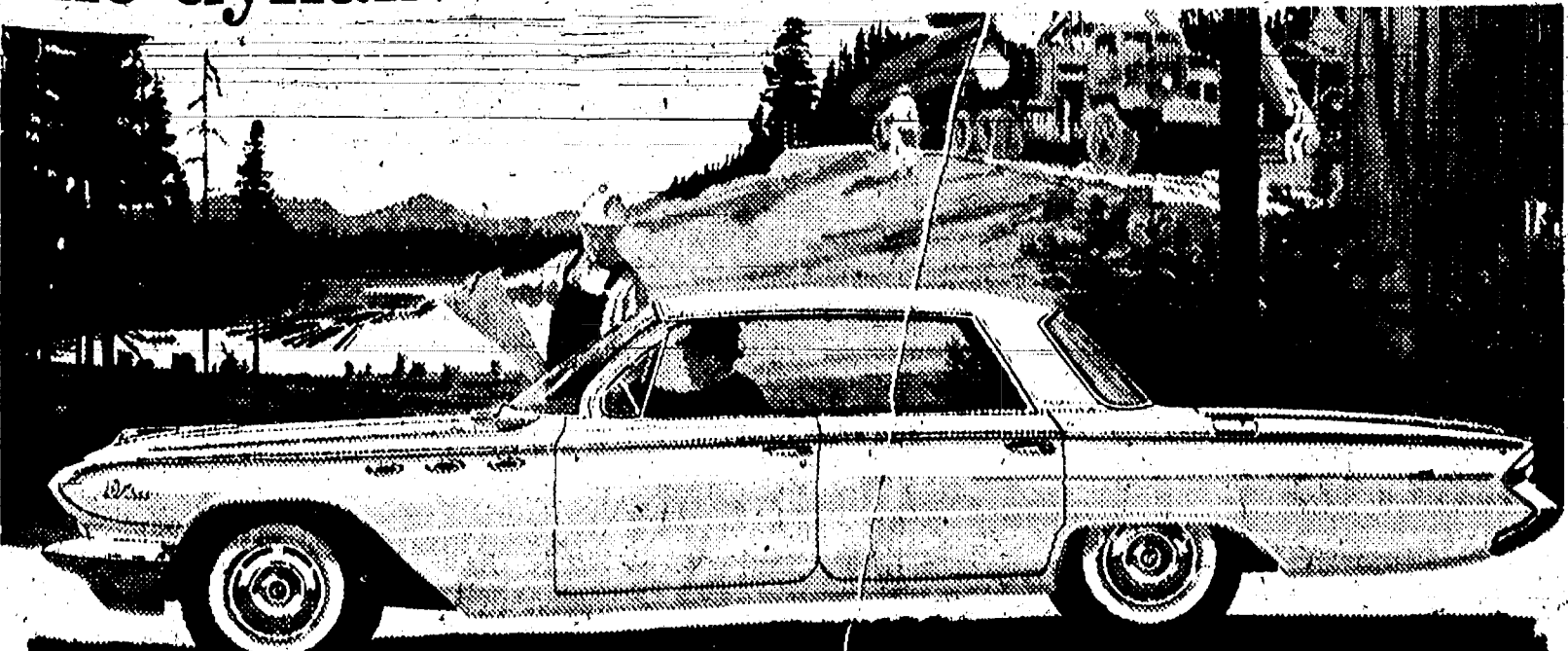


Has the neighborhood's sharpest eye for bargains. In 5 years she's saved so much money buying so-called "bargain" watches she's topped her budget. None of 'em work any more and she's finally learned that the way to save money is to buy BULOVA.

Smart birds buy BULOVA

**Winans Jewelry Store**

## The dynamite behind the Buick boom!



Buick's new Wildcat go, new Clean Look of action, roomy easy-living have sales zooming! Buick for '61 is selling great and its new Wildcat V-8 is one big reason why. Refinement after refinement gives the extra go-power people go for (and on less gas!) And Buick's new Turbine Drive (now standard on all full-size Buicks) boasts gas savings... and go even more! Add more head, leg and shoulder room... better floors, wider doors... a new satin-smooth ride... a new Clean Look of action... and you've got the exciting story behind Buick for '61. See your dealer today!

**'61 BUICK**  
SEE YOUR LOCAL AUTHORIZED QUALITY BUICK DEALER NOW...  
Quality Buick Dealer in Chelsea is: **DANIELS MOTOR SALES, INC. 208 Railroad**

## ELECTION BOX SCORE

	Sylvan Precinct	Sylvan Precinct	Lima	Lyndon	Sharon	Freedom	Solo Precinct	Solo Precinct	Webster	Dexter Township	Washington County		
<b>PRESIDENT and VICE-PRESIDENT</b>													
John F. Kennedy (D)													
Lyndon B. Johnson (D)	376	329	160	120	62	112	359	461	207	256	25,039		
Richard M. Nixon (R)													
Henry Cabot Lodge (R)	571	600	450	195	224	348	817	987	855	458	39,266		
<b>GOVERNOR</b>													
John B. Swainson (D)	389	337	159	116	64	104	357	464	208	256	24,808		
Paul D. Bugwell (R)	551	584	449	191	214	380	815	1066	852	451	39,584		
<b>LIUTENANT GOVERNOR</b>													
T. John Lesinski (D)	372	336	150	119	61	114	340	461	200	248	24,001		
Clarence A. Reid (R)	542	569	448	182	212	344	801	955	840	449	38,724		
<b>SECRETARY OF STATE</b>													
James M. Hare (D)	405	376	194	127	77	143	403	525	227	282	27,280		
William E. Kroger (R)	520	534	409	178	200	316	753	898	826	419	35,800		
<b>ATTORNEY GENERAL</b>													
Paul L. Adams (D)	398	348	164	119	73	127	356	480	208	262	25,925		
Wendell A. Miles (R)	522	552	433	182	201	330	787	929	844	434	37,373		
<b>STATE TREASURER</b>													
Samford A. Brown (D)	394	340	165	120	74	130	365	492	214	267	25,377		
David R. Calhoun (R)	524	555	434	185	203	333	779	921	886	427	37,385		
<b>AUDITOR GENERAL</b>													
Olis M. Smith (D)	372	387	161	117	73	123	356	479	207	257	24,923		
John V. Clements (R)	540	559	437	184	201	333	787	929	843	436	37,559		
<b>UNITED STATES SENATOR</b>													
Patrick V. McNamara (D)	385	351	159	118	64	127	350	492	210	267	25,349		
Alvin M. Bentley (R)	539	561	442	187	211	333	809	930	844	440	38,122		
<b>REPRESENTATIVE IN CONGRESS</b>													
Thomas P. Payne (D)	374	336	150	112	60	118	340	483	210	250	25,185		
George Meader (R)	547	574	451	189	214	342	805	942	843	449	38,207		
<b>STATE SENATOR</b>													
Richard L. Cutler (D)	373	328	151	112	63	119	346	478	200	255	25,133		
Stanley G. Thayer (R)	543	567	447	190	210	338	790	936	852	444	37,999		
<b>Representative in State Legislature (Second District)</b>													
William F. Dannemiller (D)	386	347	168	114	64	119					263	14,580	
James F. Warner (R)	530	553	442	184	207	336						435	18,683
<b>(First District)</b>													
Grace Markwardt (D)								354	467	209			11,067
Gilbert E. Bursley (R)								791	948	837			18,976
<b>PROSECUTING ATTORNEY</b>													
None (D)													
William F. Ager, Jr. (R)	564	586	473	202	229	350	823	1010	872	463			40,022
<b>SHERIFF</b>													
Lawrence P. Oltersdorf (D)	374	350	156	102	58	113	319	539	212	245			26,914
George A. Petersen (R)	561	559	453	201	219	346	846	892	846	460			36,054
<b>COUNTY CLERK</b>													
Adeline Drews (D)	359	327	143	108	52	113	319	448	192	247			23,270
Luella M. Smith (R)	561	577	462	194	225	345	834	970	859	461			39,808
<b>COUNTY TREASURER</b>													
Sylvester Blaszak (D)	361	321	146	111	51	111	309	450	186	241			23,495
William F. Verner (R)	556	579	455	189	223	346	832	970	860	457			39,065
<b>REGISTER OF DEEDS</b>													
Blaine L. Rice (D)	364	325	148	111	50	112	310	458	191	246			23,874
Patricia Newkirk Hardy (R)	554	577	450	191	217	342	822	962	861	453			38,591
<b>DRAIN COMMISSIONER</b>													
Richard E. Nash (D)	337	334	159	112	54	112	377	472	217	252			23,936
John H. Flook (R)	546	569	446	190	219	340	777	952	836	446			39,895
<b>COUNTY SURVEYOR</b>													
Edward L. Jonas (D)	365	328	142	109	54	111	316	448	189	240			23,607
Herbert S. Hicks (R)	554	574	461	191	220	344	821	964	855	452			39,059
<b>JUSTICE OF SUPREME COURT</b>													
James R. Breakley, Jr. (D)	455	484	402	214	225	372	742	911	421	413			36,264
Theodore Sauris (R)	180	164	103	83	42	85	105	259	116	126			11,952
<b>JUDGE OF PROBATE</b>													
John W. Conlin	369	395	460	235	106	350	590	880	440	440			31,500
<b>PROPOSAL NO. I (School Bonds and Loans)</b>													
Yes	402	468	269	149	108	109	541	802	275	297			32,124
No	248	336	309	143	154	244	379	430	231	231			17,312
<b>PROPOSAL NO. II (Sales Tax)</b>													
Yes	374	362	314	141	150	247	591	656	262	286			25,584
No	281	330	272	153	116	211	404	544	261	263			25,060
<b>PROPOSAL NO. III (Con-Con)</b>													
Yes	366	382	241	135	66	156	490	786	244	260			32,923
No	280	285	328	144	188	283	391	426	255	261			15,620
<b>PROPOSAL FOR SALE OF LIQUOR For Consumption on Premises</b>													
Yes								446	671				
No								573	666				

## State Park Entrance Stickers Mailed to Dealers

Lansing—Some 60,000 annual park entrance stickers for 1961 will be mailed next week to 1,200 hunting and fishing license dealers in Michigan.

They will be sent to dealers in areas covering parks where the sticker requirement goes into effect Jan. 1. Parks users will need annual or daily stickers on windshields of their vehicles to enter 55 of Michigan's 62 parks next year.

Conservation Department officials point out that parks are open year-round and urge those planning to buy annual stickers to do so early and make the most of recreation opportunities during the winter as well as the remainder of the 12-month parks season.

The annual sticker will cost \$2.15. Of this, \$2 will be earmarked to retire a bond issue which will finance a proposed \$3,000,000 parks improvement and land acquisition program during the current fiscal year. The remaining 15 cents will be collected by the dealer to cover his handling costs.

Daily 50-cent stickers will be sold at parks where they are required. All sales proceeds from these stickers will go directly toward retiring the bond issue.

year-round and urge those planning to buy annual stickers to do so early and make the most of recreation opportunities during the winter as well as the remainder of the 12-month parks season.

The annual sticker will cost \$2.15. Of this, \$2 will be earmarked to retire a bond issue which will finance a proposed \$3,000,000 parks improvement and land acquisition program during the current fiscal year. The remaining 15 cents will be collected by the dealer to cover his handling costs.

Daily 50-cent stickers will be sold at parks where they are required. All sales proceeds from these stickers will go directly toward retiring the bond issue.

Daily 50-cent stickers will be sold at parks where they are required. All sales proceeds from these stickers will go directly toward retiring the bond issue.

Daily 50-cent stickers will be sold at parks where they are required. All sales proceeds from these stickers will go directly toward retiring the bond issue.

Daily 50-cent stickers will be sold at parks where they are required. All sales proceeds from these stickers will go directly toward retiring the bond issue.

Daily 50-cent stickers will be sold at parks where they are required. All sales proceeds from these stickers will go directly toward retiring the bond issue.

Daily 50-cent stickers will be sold at parks where they are required. All sales proceeds from these stickers will go directly toward retiring the bond issue.

Daily 50-cent stickers will be sold at parks where they are required. All sales proceeds from these stickers will go directly toward retiring the bond issue.

Daily 50-cent stickers will be sold at parks where they are required. All sales proceeds from these stickers will go directly toward retiring the bond issue.

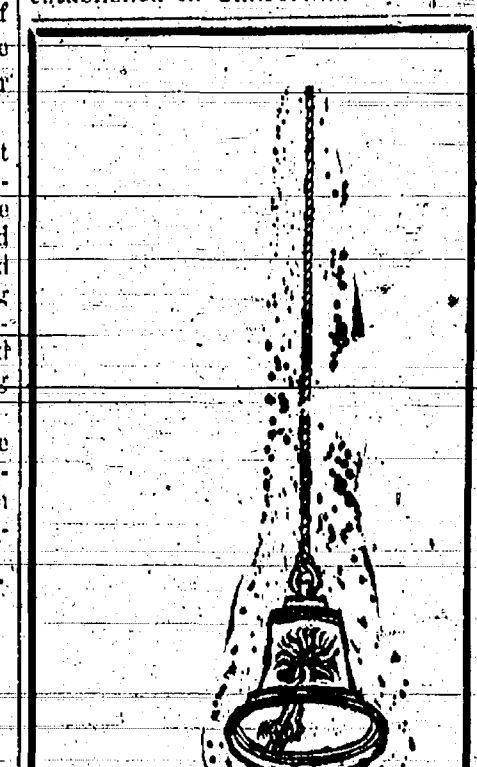
Daily 50-cent stickers will be sold at parks where they are required. All sales proceeds from these stickers will go directly toward retiring the bond issue.

Daily 50-cent stickers will be sold at parks where they are required. All sales proceeds from these stickers will go directly toward retiring the bond issue.

Daily 50-cent stickers will be sold at parks where they are required. All sales proceeds from these stickers will go directly toward retiring the bond issue.

Daily 50-cent stickers will be sold at parks where they are required. All sales proceeds from these stickers will go directly toward retiring the bond issue.

In 1890 Yosemite, Sequoia and General Grant national parks were established in California.



Provide Yourself Peace of Mind Through the

**\* TAILORED PROTECTION**

of **Auto-Owners INSURANCE COMPANY**

No bells are rung to warn of impending disaster. That's why the TAILORED PROTECTION of an Auto-Owners Homeowners Policy is important... just in case. Let us show you how to obtain protection against fire, wind, storm, theft... even personal liability. Ask us for details today.

**A. D. MAYER**

"Insurance for Every Need"  
115 Park St., Chelsea, Mich.  
Phone: Office GR 5-7131  
Res. GR 5-4201

## Niece from Germany Visits Carl Schwegers

Antje Diesner of Husum, Schleswig-Holstein, Germany, who is at present in New York City, spent last week here as the guest of her uncle and aunt, Mr. and Mrs. Carl Schwegers. Friday evening the Schwegers and their niece were guests of Mr. and Mrs. Anton Nielsen and viewed color pictures the Nielsens had taken while on a European tour during which they visited Miss Diesner's parents' home and that of her grandmother. Miss Diesner's mother is a sister of Mr. Schwegers and her grandmother is Mr. Schwegers's mother whom he has not seen since coming to this country many years ago.

SUBSCRIBE TODAY TO THE CHELSEA STANDARD!

## Grid Champs

(Continued from page one)

hit over Charley Waller and Ken Larson for the extra point. With about two minutes remaining the Bulldogs showed a new lineup with Mike Marsh, Charley Waller, Co-Captain Dan Mayer and Ellenwood regular guards and tackles, playing in the backfield and the senior backs playing one position. Each back carried the ball 45 yards to score. Charley Waller sped around his left end for 15 yards and the T.D. Co-Captain Jerry Ringe's extra point attempt was not good to wind up the scoring. Fifteen Chelsea Seniors played their final high school game Friday and the coaching staff and fans certainly hate to see them leave.

## WINTERIZE YOUR CAR



Prestone - Zerex Mobil Anti-Freeze Thermostats **FOOR'S MOBIL SERVICE**

**FIVE TABLES LOADED WITH SEASONABLE MERCHANDISE**  
**At 1/2 off Regular Prices**  
ALL ON ANDERSON'S SECOND FLOOR  
Special purchase of salesman's samples, plus odd lots from our own stock.  
*Don't Miss These Unusual Bargains!*  
**ANDERSON'S** Where Friendly, Courteous Service Makes Shopping A Pleasure!



# RENT • SELL • BUY • TRADE • HIRE • SERVICE • WANTED • ADVERTISING • OPPORTUNITIES

## WANT ADS

## The Chelsea Standard WANTED AD RATES

PAID IN ADVANCE—All regular advertisements, 50 cents for 25 words or less, each insertion. Count each figure as a word. For more than 25 words, add 2 cents per word for each insertion. "Blind" ads or box number ads, 50c extra per insertion.

CHARGE RATES—Same as cash in advance, with 10 cents bookkeeping charge if not paid before 5 p.m. Tuesday preceding publication. Pay in advance, send cash or stamps and add 10c.

CARDS OF THANKS or MEMORIALS—Single paragraph style, \$1.00 per insertion for 50 words or less; 15c per word beyond 50 words.

DISPLAY WANTED ADS—Rate, \$1.10 per column inch, single column width only. Second and third line type only. No borders or boldface type. Minimum, 1 inch.

COPY DEADLINE—5 p.m. Tuesday, week of publication.

PAINTERS. Do-It-Yourselfers—Have Paint You Want Colored? We will tint any color, size or brand you may have. Merkel Brothers. 147t

## SEPTIC TANK CLEANING

Prompt, reliable service by a local firm you know you can depend upon.

## FREE ESTIMATES

**BOLLINGER Sanitation Service**  
Licensed by Mich. Health Dept.  
Phone GR 9-5973 Chelsea, Mich. 74t

FOR SALE—Girl's 26-inch bike; boy's 26-inch bike; lady's figure ice skates size 7; Teeter Babs. Phone GR 5-4691. 19

RUBBER FOOTWEAR—Buy the best—Ball Band, Foster's Men's Wear. 19

## BUILDING LOTS

1 acre or more on blacktop

## Kern Real Estate

622 South Main St.  
Chelsea, Michigan  
Phone Greenwood 8-7681  
or Greenwood 5-4605 147t

CABINET MODEL Singer sewing machine with zig zag for making designs, overcasting, etc. Knee control. Pick up for low balance, \$49.90 or pay \$5.25 per month. Write Box AP 22, care of Chelsea Standard. 19

**NAPOLION LIVESTOCK COMMISSION CO.**  
Located on M-50, Napoleon, Mich.

## AUCTION

Every Monday, 2:00 p.m.  
Buyers for all kinds of livestock. Dairy cattle tested sale day. State approved to handle Bangs Cows.

For Pickup Service, call Napoleon, KEystone 6-4291

**ORIN and DALE HESELSCHWERDT** 84t

FIFTEEN cents a year will protect your overcoat from moth damage for 5 years. One spraying of BERLOU Guaranteed Moth-spray does it or BERLOU pays for the damage. Merkel Bros. 19

WANTED TO BUY—Used typewriter. Phone GR 9-1766. 19

FOR RENT—2 bedroom home in the country. Oil heat. Adults preferred. Phone GR 9-4328. 20

## Gulf Oil Products

Fuel Oil and Gasoline.

## ALBER OIL CO.

Dexter, Mich.

Call Collect: HA 6-4601 or HA 6-8517 94t



**PEACE and SYMPATHY**  
... pervades our repose rooms and chapel ... music from our organ soft and mellow ... our staff kindly, courteous and competent ... experienced as funeral directors for three generations.

**Staffan Funeral Home**  
FUNERAL DIRECTORS FOR THREE GENERATIONS

124 Park Street Phone GR 5-4417

## WANT ADS

TV TROUBLE? Have your TV, radio, HiFi repaired by a school-trained radio and TV technician. Guaranteed workmanship. Service charge \$3 plus parts. Call GR 5-8380. Porter's TV Service. 212 Buchanan St. 20

## REAL ESTATE

THREE BEDROOM brick with two car garage. Gas heat. Like new.

THREE BEDROOM ranch. Three years old. Has garage. Very nice.

FOUR (OR FIVE) BEDROOM older house. New gas furnace. Large lot.

THREE BEDROOM ranch house with full basement. One acre lot. In village limits.

THREE BEDROOM brick and stone ranch house. Six miles out.

LOTS: CEDAR LAKE with lake privileges.

PORTAGE LAKE one block from water.

ONE ACRE four miles from town on blacktop road.

**Clarence Wood**  
640 Flanders St.  
Greenwood 9-4603

**RUDY SCHMERBERG-BROKER**  
Normandy 5-6669 19

FOR RENT—Newly-remodeled 2-bedroom home. Fully-insulated. Gas furnace. Call after 5 p.m., GR 9-5773. 19

FOR SALE—Chest-type freezer. Very good condition. Phone GR 9-2292. 19

ROOM FOR RENT—Gentlemen preferred. 124 Lincoln St. Phone GR 5-8146. 20t

FOR SALE—Wood combination storm-screen door—7x32", \$5; walnut drop leaf coffee table, \$8; tiled table, \$3; and tables \$5 per pair; matching lamps \$5 per pair. Phone GR 5-6251. 19

**Safe Buy Used Cars SALE!**

1960 MERCURY 4 dr. Hardtop

1958 FORD 2 door Sedan

1955 CHEVROLET 4 door Hardtop

1957 CHEVROLET 2 door

1956 FORD 4 door Sedan

1955 PONTIAC 2 door Sedan

1955 PLYOUTH 2 door Sedan

1954 FORD Wagon

1954 CHEVROLET 4 door Sedan

PRICES ARE CUT AS MUCH AS \$500.00 ON THE ABOVE CARS. All are Winterized.

**Chelsea Implement Company**  
Phone GR 5-5011 19

FOR SALE—Deer rifle, rabbits, first and second cutting alfalfa hay, and straw. Phone GR 9-5161. 19

FOR SALE—Muscovy ducks, live or dressed. Helen Valant. 13050 Sager Rd. GR 9-3475. 20

FOR SALE—45-gallon gas hot water heater, glass lined. Excellent condition. \$45. Phone NO 5-4750. 19

## LAY-AWAY

A Small Deposit Will Hold Any Toy or Gift Until CHRISTMAS

**Chelsea Hardware**

SINGER Dial-a-Stitch zig-zag sewing machine. No attachments needed to put on buttons, designs, buttonholes, etc. In console. Must sell. Balance \$54.60 or take on layments \$5.50 per month. Write Box AP 22, care of Chelsea Standard. 19

## WANT ADS

FOR SALE—60-acre farm at 2180 Sharon Hollow Rd., just off Grass Lake Rd. All modern 4-bedroom home. Hardwood floors. Beautiful fireplace. Nice location. Immediate possession. \$15,500. In Chelsea School District. Phone GR 5-4302. 17t

## Real Estate For Sale

2 bedroom home on 1 acre in Chelsea. \$2500.00 down.

3 Bedroom Ranch type home, new.

4 Bedroom home. New roof, aluminum windows and doors, garage, glassed in porch.

Also 3 room and bath apt. for rent with garage.

**Kern Real Estate**  
GR 9-7681 12t

MAJOR LIVESTOCK feed company needs a salesman in Washington County. For confidential interview write John Balchick, Albion, R. 3. Phone Springfield UL 7-6201. 20

KITTEN FOUND—Also bicycle found. Owners may reclaim by interview write John Balchick, 302 Lincoln. 19

**GAMBLES Rental Equipment**

FLOOR SANDER  
FLOOR EDGER  
FLOOR POLISHER  
SANDER  
(Oscillating type)  
WALLPAPER STEAMER

Rent this new, modern equipment by hour or day.

**GAMBLES**

110 N. Main St.  
Phone Chelsea GR 9-2311. 4t

FOR SALE—32 Special Winchester and shells at 17416 W. Austin Rd., Manchester. Phone GA 8-3261. 19

**Chelsea Area Lots**

80' x 500', Joalin Lake. \$400 down.

250' x 140', Cavanaugh Lake Road. \$500 down.

**MANCHESTER AREA**  
Farms of 60, 75, 80, 79, 118, 135 and 165 acres.

Also vacant land—5, 10, 20, 55, 75 and 130 acres.

**MANCHESTER VILLAGE**  
7-room home with recreation room and bath. Gas heat. 2-car garage. Burnt Paved drive—18 acres land.

Several 2- and 3-bedroom houses, income property and building lots.

**Henry W. Buss**  
Phone GR 9-3752  
Representing  
JOHN B. FAHEY, BROKER  
15554 Fahey Rd., Manchester  
Phone GA 8-8948 or GA 8-4342.

FOR SALE—Deer rifle. 25-gauge Remington Woodsmaster. Phone GR 9-4781 after 6 p.m. 19

FOR SALE—Good refrigerator, medium size. Cheap. Phone GR 5-7382. 19

APARTMENT FOR RENT—First floor. Stove, refrigerator and heat furnished. Phone GR 9-1891. 19t

**FARM LOANS!**

Buy land, livestock, refinance. Free Appraisals—Fast Service

**LAND BANK**  
ROBERT HALL, MGR.  
2221 Jackson Ave.  
Ann Arbor, Mich.  
Telephone Normandy 5-8189 24t

FOR SALE—Chester White boars. Phone GR 5-8185. 12875 Old US-12 E. 19

FOR RENT until May 1, modern cottage at Sugar Loaf Lake. Furnished. Reasonable. Phone WE 5-5400. Detroit. 19

WANTED—Someone to care for 2 small children while mother works. Phone GR 5-8185 after 4:30 p.m. 19

**CLOGGED SEWER**  
Reynolds Sewer Service

We Clean Sewers Without Digging  
Drains Cleaned Electrically  
FREE ESTIMATES  
2-YEAR GUARANTEE  
Phone Ann Arbor NO 2-5277  
"Sewer Cleaning Is Our Business—Not a sideline" 88t

RUBBER FOOTWEAR—Buy the best—Ball Band, Foster's Men's Wear. 19

RESERVE MONDAY evening, Nov. 14, for Chelsea Rod and Gun club showing of Russ Potter's Flight to the Soviet at Chelsea High school auditorium. 20

SEE "Flight to the Soviet" all-color film report of people in Russia today. Chelsea High school auditorium Monday, Nov. 21. Sponsored by Chelsea Rod and Gun club. 20

## TIPS



"Before we started using the Standard Want Ads—you didn't know which way was up!"

## WANT ADS

CUSTOM SLIP COVER work. You furnish material, we furnish labor. Rose Young, Gregory, Alpine 6-2445. 21

**Frigidaire - Norge APPLIANCES**  
Washers - Dryers - Ranges  
Freezers - Refrigerators  
Built-in Kitchen Units

**ZENITH**  
TV - Radios - Hi-Fi

FLOOR COVERING and Complete Household Furnishings.

**MEABON'S TV, Furn. & Appl.**  
105 N. Main Phone GR 5-5191 14t

NOW THAT YOU are cleaning up or out for Thanksgiving, how about giving any surplus or extras to Goodwill? Call Wesley Morrison at GR 9-1952 for pick-up on Nov. 15.

FOR RENT—Small year around home near Cavanaugh Lake. Phone GR 5-5441. 19

**Pittsburgh Paints**

OVER 3,000 COLORS

**Chelsea Hardware**

FOR SALE—'53 Pontiac hardtop. Radio heater, automatic. No rust. Phone GR 9-2074 after 6 p.m. 16t

FOR SALE—64 acres of hunting land on Rainy River, 2 miles east of Onaway, Tenn. Cecil Cyndersman, 12015 Weimann, Pinckney. 19

FOR SALE—1 1/4 miles from Chelsea, 1 acre of land and 3 homes. Live in one, rent the other 2. Gives you a nice income. 2-bedroom home has new bath and utility room. Also small barn and garden spot. \$12,000. Phone GR 5-7984. 19

FOR SALE—Hay and Hereford heifer, or trade for steers. 6710 Werkner Rd. Phone GR 5-8339. 19

Standard Want Ads Get Results!

SUBSCRIBE TODAY TO THE CHELSEA STANDARD!

**- FOR SALE -**

FIVE-ROOM HOUSE, 3 miles out. Oil furnace, 2-car garage, about 3-acre lot. Price \$8,500. \$1,500 down.

220-ACRE FARM—Well located. Good buildings. Price, \$38,500.

TWO BEDROOM MODERN COUNTRY HOME—Fireplace, full basement with recreation room, oil furnace, corner lot, garden spot. \$12,500. Reasonable down payment.

119-ACRE DAIRY FARM. 4-bedroom house, 76-foot hip-roof barn. Large silo. Attached milk house. Bargain at \$18,500.

NEAR MUNITH. 30-acre farm. Modern 2-bedroom house. Barn and chicken house. \$8,500 cash.

CAVAUGHN LAKE modern, 6 rooms. Pine-paneled living room, large enclosed porch overlooking lake, full basement, recreation room, oil furnace; garage, excellent beach and lot, road in back. Priced for quick sale, \$15,000. Part down.

List your real estate with R. D. Miller for fast, efficient service.

HAVE BUYERS FOR CHELSEA HOMES.

**R. D. MILLER**  
REAL ESTATE BROKER

Office: 15775 Cavanaugh Lake Road  
Post Office Box 388 Chelsea, Michigan  
Phone: GR 9-5992

## WANT ADS

**BULLDOZING**  
For Prompt Service Quality Work  
**DICK KISS**  
6945 Werkner Rd., Chelsea, Mich.  
Phone GR 5-7192  
If no answer call GR 5-7562. 88t

HOUSE FOR RENT—2-bedroom, modern, on block-topped road 6 miles NW of Chelsea, \$45 a month. Phone GR 9-4743. 19

FOR RENT—Nicely furnished apt. overlooking Cavanaugh Lake. Tile bath, built-in tub and shower. 867 Cavanaugh Lake. Reasonable. 19

**Grinder Set-Up**

EXPERIENCED on the following grinding machines:  
Blumhach Rotary Surface  
Barnes Verticle Hone  
Cincinnati Centerless  
Bryant Hole and Face  
Newton O-D.

Must be able to read blueprints and precision measuring instruments.

Phone Ypsilanti HU 3-4461 or apply at.

**Gar Wood Industries PUMP DIVISION**

800 LOWELL YPSILANTI 21

HAVE YOUR septic tanks cleaned before winter. Call GR 9-8195 after 4:30 p.m. 19

ANYONE KNOWING whereabouts of a number of chairs borrowed from Staffan Funeral Home please contact G. L. Staffan. Some of the chairs are natural finish with blue upholstery and others maple finish with green upholstery. 15t

**MOR-SUN Gas or Oil Furnaces**

Conversion Burners

Before You Buy—See Us. We can save you money.

Hours: Daily, 8 a.m. to 5:30 p.m. Fri., 8 a.m. to 8 p.m.

Emergency service calls: GR 5-8175

**Hilltop Plumbing HEATING & ELECTRICAL CONTRACTORS**

Authorized Dealer for Mor-Sun Furnaces and Air Conditioners

201 South Main St. Chelsea, Mich. Phone GR 5-7201 15t

RUBBER FOOTWEAR—Buy the best—Ball Band, Foster's Men's Wear. 19

FOR SALE—Upright piano; also, single-chain, 24-ft. steel elevator for grain or corn. Phone GR 9-2461. 19

FOR SALE—'62 convertible Ford. In fair condition. \$150. Call GR 5-7241. 20

**REAL ESTATE**

2-bedroom house. All aluminum storms and screens. Several out-buildings. On 5 acres, mostly frontage on blacktop. Tractor and some small tools included.

5-bedroom home 6 miles out on nearly 5 acres land. Beautiful country home. Deep well. New oil furnace.

In Chelsea, newly - remodeled 3-bedroom home. New gas furnace. Large lot.

Large brick home near downtown.

**MINNIE SCRIPPER, BROKER**  
Chelsea Phone GR 9-2789  
If no answer call GR 5-4311 19t

FOR RENT—4-room apartment 3383 Sylvan Rd. 19

HOUSE FOR SALE—3-apartment house with 2-car garage, full basement, good location, close to churches, schools and downtown. For appointment to see phone GR 9-8281. 61t

**GAMBLES**

LAY-AWAY NOW FOR CHRISTMAS.

A small deposit will hold any item.

See our Toy-Land, Shop All Departments

Always Better Buys at Gambles. 24

**Sand-Gravel-Black Dirt**

BULLDOZING - DIGGING BASEMENTS - TIPPING

**C. Trinkle & Son**  
Ralph Trinkle, Owner  
18241 Solo Church Road  
Phone GR 9-1296 87t

Forty-one states, including Michigan, have laws that give full or partial protection to hawks, owls and eagles.

## WANT ADS

**Hank's Refrigeration and Home Appliance**  
Phone GR 9-6711 19t

FOR SALE—2 Corriedale rams and 1 Suffolk ram. Phone HA 6-6638. 20

**FOR SALE**

Rely On Calking cartridges ... 39c  
In cartons of 10, each ... 35c  
Weather Strip rubber, ft. ... 10c  
Felt, pkg. of 17 ft. ... \$1.50  
Felt, pkg. of 17 ft. each ... 10c  
Spring Bronze, pkg. of 17 ft. ... \$1.50  
Spring Bronze, bulk, per ft. ... 8c  
Mortite, covers 6 average windows ... \$1.50  
Window Fabric or Glass substitute. Calkers, plaster, 8 ft. wide, per linear ft. ... 10c  
Glasonet, 38" wide, per lin. ft. ... 20c

**MERKEL BROS.**

RUBBER FOOTWEAR—Buy the best—Ball Band, Foster's Men's Wear. 19

FOR SALE—30-30 Winchester rifle, one year old; box of shells; 220-gal. fuel oil tank; 1961 Pontiac 2 door sedan. Phone GR 9-4028. 19

FOR SALE—Two 1960's Suburban hardtop sedans. 1960's 1962 season. Phone GR 9-4871 or 9-4872. 19

**Digging For Septic Tanks And Drain Fields**

With the addition of our new power digging equipment we are now able to offer you complete service.

Septic tanks from 300-gal. to 2,000 gal. available for prompt installation.

Hours: Daily, 8 a.m. to 5:30 p.m. Fri., 8 a.m. to 8 p.m.

Emergency service calls: GR 5-8175

**HILLTOP PLUMBING BOB SHEARS**  
201 S. Main Phone GR 5-7201 15t

FOR RENT—2 bedroom home near Chelsea. Living room, dining room, kitchen with dining alcove, 1 1/2 baths. Oil heat. Phone NO 5-2166. 19

FOR RENT—Lower 3-room apartment with bath and large enclosed porch. 318 Ann Arbor St., Manchester. Phone GR 8-5592. 19

DON'T FORGET—Monday evening, Nov. 21, Russ Potter's Flight to the Soviet, an all-color film, narrated by Potter at Chelsea auditorium. 20



## Attention Safe Drivers

**DAN MARONEY**  
now represents  
**The America For Loyalty Group**  
**CAREFUL DRIVER Insurance Companies**  
**Seaboard Fire and Marine Insurance Co.**  
Call Greenwood 9-5631

## From where I sit... by Joe Marsh

### Speak Up, Doc

Doc Turner was up playing bridge with Smiley Roberts the other day when, long about supper time, Mrs. Roberts invited him to stay and have a pie with them.

Now, Doc had sniffed a cherry pie coming out of the oven and his mouth was watering. But what did he say? "No, thanks," says Doc. "Some other time, then," says Mrs. Roberts, and back she goes into her kitchen.

Well, next day Smiley ran into Doc on the street. Smiley said, "You missed some good cherry pie last night, Doc."

"Don't I know it?" says Doc. "I sure wanted to stay but your missus only asked me once!"

From where I sit, Mrs. Roberts has the right idea about persuading people. Give folks credit for knowing their own minds. For instance, I never coax anyone to join me in a glass of beer. And if they don't try to talk me into drinking their favorite beverage, we'll get along fine. You can't persuade folks to be good neighbors, but you can "invite" them.

Joe Marsh

Copyright, 1960, United States Brewers Foundation

## LAY-AWAY NOW FOR CHRISTMAS

Shop while the stocks are complete and there is no rush!

## PROOF! YOUR DOLLARS BUY MORE with the Schwinn TIGER

the all new Speedster

Top Schwinn Quality at only \$49.95

You get MORE FOR YOUR MONEY in the Schwinn Tiger! Schwinn Quality construction plus 3-speed gears, hard brakes, front carrier, chrome headlight, chrome rims and whitewall tires. Comes in 26, 24 and 20-inch models. SEE IT NOW!

## AMERICA'S BEST BIKE BUY! Schwinn TORNADO

TAKE YOUR CHOICE! \$41.95

Boys Girls

You get famous Schwinn Quality construction at a rock-bottom low price in the Schwinn Tornado! Trim middleweight model with coaster brake. Comes in 26, 24 and 20-inch sizes. Boys in Red, Girls in Blue.

DON'T DELAY... QUANTITIES LIMITED! A SMALL DEPOSIT WILL HOLD

## MERKEL BROS.

# BOWLING NEWS

Grass Lake-Chelsea Women's League			
Standings as of Nov. 2			
	W	L	
Pabst Excavating	41	8	
Three Sons Bar	34	15	
Colonial Manor	32	17	
Niehaus	31	18	
Romer's Take-Out	25	24	
Sail Inn	25	24	
Hank's Refrigeration	23	26	
Pettling's Marathon	21	28	
Pete's Shell Service	20	29	
Strait & Prentice	10	30	
A. D. Mayers, Inc.	12	32	
Meyers Grocery	11	33	
600 and over: W. Bahnmiller, 511; R. West, 510; B. Haffley, 502; 450 and over: R. DeBolt, 481; J. Fletcher, 487; M. E. Bubanks, 461; 400 and over: V. Radgrom, 440; M. Neal, 434; M. Briesenwacher, 429; E. Wyers, 428; M. Stofor, 425; B. Pabst, 419; J. Strait, 407; J. Weaver, 403.			
Chrysler Proving Ground League			
Standings as of Nov. 1			
	W	L	
Wolverine Keys	20	8	
Frigid Products	20	8	
UAW Local 1284	19	9	
Frank's Bar	18	13	
Pettling's Marathon	14	14	
Poor's Service	13	15	
Knoll's Ashland Service	13	15	
Weber's Dairy Bar	12	16	
The Pub	12	16	
Tison Motor Sales	11	17	
Dreway Beer	10	18	
Carling's Black Label	9	19	
200 scores: Swanberg, 226; Harvick, 215; Poertner, 211; Barth, 202.			
500 series: Poertner, 587; Swanberg, 582; Harvick, 574; Padgham, 548; Barth, 526; Foreman, 521; Lake, 516; Pniowski, 510; Sweeney, 511; Stevens, 504; Dann, 501.			
Chelsea Mixed League			
Standings as of Nov. 5			
	W	L	
Slocum Contractors	19	7	
No. 9	19	7	
No. 1 VFW	11	9	
No. 5	8	12	
No. 2	5	15	
No. 2	3	17	
High tea miscor: Slocum Contractors, 2,159.			
150 individual team game: Slocum Contractors, 750.			
High individual series: Dave Feldkamp, 605.			
High individual game: Carl Miller, 184.			
475 series: F. Schumm, 551; G. Lawrence, 527; L. Kusterer, 524.			
425 series (women): N. Simpson, 457; G. Geer, 453; E. Mayne, 451; E. Packard, 436.			
175 games: F. Schumm, 207-189; L. Kusterer, 190-176; G. Lawrence, 189-184; L. Bishop, 189.			
150 games (women): N. Simpson, 173; G. Geer, 169; E. Packard, 168; P. Patterson, 160; R. Winchester, 156; A. Turner, 150.			
Calvin Clark bowled a triplicate score (129).			
Jack Turner and his wife, Agnes, have the same pin-fall for 21 games, 3,092.			

## NO SUN

but no washday worry either—when you dry with a modern gas dryer

Rain or snow—there's no problem, once you own a modern gas dryer. You can weather washday storms—and still be sure your wash has the fresh, sweet fragrance of a sunny day when it's tumbled under the gas dryer's ultraviolet lamp. And you dial by fabric settings—the right heat for each fabric.

Best news—your modern gas dryer is a model of thrift, drying at just 1/3 the cost of others! See the new models at Gas Company offices or dealer showrooms—you'll choose gas, naturally!

MICHIGAN CONSOLIDATED GAS COMPANY

FREE INSTALLATION during Gas Dryer Dividend Days

## Refresh with MILK

MILK is best for your baby's health

Give Baby the right start in life with lots of milk. It's nature's most nearly perfect food—rich in vital food values that help little bodies grow up strong and healthy.

## WEINBERG DAIRY

Old US-12 Phone GR 5-5771

### NORTH FRANCISCO

Saturday evening callers of Mrs. Eva Notten and Gilbert Main were Mr. and Mrs. Mitchell Reid, Sunday callers were Clarence Lehman, Fred and George Haffley.

Mr. and Mrs. Dillman Wahl and Loretta and Mr. and Mrs. Leroy Loveland spent Sunday evening with Mrs. Leonard Loveland.

Mr. and Mrs. Chester Notten spent Thursday with their son-in-law and daughter, Mr. and Mrs. Chester Davis and family, of Angola, Ind.

Max Hoppe was a Wednesday dinner guest of Mr. and Mrs. Roy Miller. Emerson Lesser was a Thursday evening visitor and Mr. and Mrs. Philip Hoster were Sunday evening visitors there.

Mr. and Mrs. Roy Miller were Saturday evening callers of Mr. and Mrs. Max Hoppe.

Mr. and Mrs. Clarence Lehman held open house Sunday for their son-in-law and daughter, Mr. and Mrs. George Elkins.

Recent visitors at the home of Mr. and Mrs. Harold Wahl were Mrs. Hazel Katz and granddaughter of Munich, Mr. and Mrs. Arthur Wahl of Manchester and Mrs. Nina Wahl.

Mr. and Mrs. Truman Lehman were Sunday dinner guests of Mr. and Mrs. Chester Notten.

Gilbert Main entered St. Joseph's Mercy hospital, Ann Arbor, Monday afternoon.

### UNADILLA

Mrs. Louis Kaiser is a medical patient at St. Joseph's Mercy hospital, Ann Arbor.

Mr. and Mrs. Wilbur Hone of Farmington visited Mr. and Mrs. Ralph Wright Saturday.

Mrs. Veva Kaimbach and Mrs. Stoffer called Friday on Mr. and Mrs. Oscar Kaimbach of rural Chelsea.

Mr. and Mrs. Clarence Embury spent Sunday afternoon with Mr. and Mrs. Clyde Meabon near Ann Arbor.

Reamon Hadley received a broken vetebra Saturday while he and Edwin Corser were felling a tree. Reamon failed to get out of the way quickly enough and the tree hit his back. He was taken to Mercy Hospital in Jackson but returned to the home of his mother, Mrs. Marguerite Hadley, Sunday afternoon.

Mr. and Mrs. Colon Charkick of Detroit spent the week-end with Mr. and Mrs. Clair Barnum.

Mrs. Francis Richmond returned home from the hospital last week.

David Glynn and John Reilly went to Allegan to hunt geese Friday and Saturday. They returned with one goose.

Callers of Mrs. Myme Rose and Mrs. Delores Rano last week were William Jackson, Mr. and Mrs. Gus Maschke, the Rev. and Mrs. Yach, Carl Bollinger, Mrs. Clyde Purkane and Mrs. Marguerite Hadley.

The Rev. William Yach baptized his great-granddaughter, Deborah Ann, daughter of Mr. and Mrs. Richard Wood, of Lansing, Sunday morning. Mr. and Mrs. Kenneth Van Buren were the sponsors.

The congregation of the Unadilla church will have a potluck dinner at the Hall Sunday following Sunday School. This Sunday is designated as "Stewardship and Every Member Canvass Sunday."

### WATERLOO

Mr. and Mrs. John Dykemaster and Mr. and Mrs. Vern Gayfield of Jackson were guests on Sunday at the Leigh Beaman home.

Mr. and Mrs. Wilbur Beaman and Gordon and Mrs. Ione Moockel attended open house for Mr. and Mrs. George Elkins at the home of her parents, Mr. and Mrs. Clarence Lehman, on Sunday.

Mr. and Mrs. Welton Bohne were guests on Sunday at the home of Mr. and Mrs. Walter Bohne of Francisco. They all attended the open house at the Clarence Lehman home.

Mr. and Mrs. Richard Vicary and children, of Elkhart, Ind., spent Saturday afternoon with his parents and called on former neighbors.

Bill Hess of Detroit was a visitor at the home of his niece, Mrs. Welton Bohne and husband and her mother, Mrs. Hurry Hess.

Following extensive improvements in the parsonage of the Waterloo Village church, the Rev. and Mrs. Silvernail held open house on Sunday afternoon. Seventy-five signed the guest book and expressed delight in the remodeling and improvements. Refreshments were served by Mrs. Norman Mollenkopf Miss Jennie McGuffie, Mrs. Donald Boeman, Mrs. Kenneth Platt, Mrs. Kenneth Carly and Kay. Assisting them were members of the Youth Fellowship group.

Mr. and Mrs. Floyd Rowe called on Mr. and Mrs. Walter Vicary at their home in Chelsea recently.

Mr. and Mrs. Richard Hadley of Dexter are now occupying the Walter Vicary home in Waterloo.

### ROGERS CORNERS

The Rev. and Mrs. M. W. Brueckner returned home Wednesday from a six-week trip during which they were guests of relatives and visited many points of special interest in the western part of the country. They spent some time with their son and family, the Rev. and Mrs. Theodore Brueckner and children at Beaverton, Ore; and their daughter and family, the Rev. and Mrs. James Hunter and children at Salem, Ore. Enroute home they visited the Rev. Brueckner's sister and her husband, the Rev. and Mrs. Albert Guetzlaff at Waverly, Ind. and his brothers and sisters-in-law, Mr. and Mrs. Alfred Brueckner of Garner, Ia., and Mr. and Mrs. Edward Brueckner of Dyersville, Ia.

### FOUR MILE LAKE

Mr. and Mrs. Henry Englehart and Mrs. Mata Lucht visited their aunts, Mrs. Emma Klein and Mrs. Paul Halst of Ann Arbor on Sunday.

Mr. and Mrs. Earle Pettibone spent the week-end with their niece and her husband, Mr. and Mrs. Leigh-Moysenburger of Alma.

Sue Ann Heydauff spent the week-end with her grandparents, Mr. and Mrs. Conrad Turner of Dexter.

Mr. and Mrs. Alvin Wahr and family, of Helm Rd., were Thursday evening visitors of her parents, Mr. and Mrs. Ezra Heining.

Mr. and Mrs. Earl Odom of Ypsilanti were week-end guests of Mr. and Mrs. Richard Abdon and son.

Mrs. Harry Loy of Pratt Rd. was a Thursday visitor of Mr. and Mrs. Earle Pettibone.

Mr. and Mrs. Eugene Esch and family, of Grass Lake, were Saturday evening visitors of Mr. and Mrs. Alvin Brassow and family.

Mrs. Alvin Brassow attended a bridal shower Sunday afternoon, honoring Nancy Lindow.

Mr. and Mrs. Alvin Brassow and family spent Sunday evening in Pinckney as guests of Mr. and Mrs. Louis Esch and family.

Mrs. Gary Wright and Mrs. Burton Wright were co-hostesses at a shower, Sunday, honoring Mrs. Duane Genter of Ypsilanti.

Mr. and Mrs. Rufus Gihlan of Tecumseh were Sunday evening visitors of Mrs. John Fischer.

## BURGHARDT FUNERAL HOME

214 E. MIDDLE ST. CHELSEA

Phone GR 5-4141 or GR 5-5141

## SPECIALS

Hot Dogs . . . . . 1 lb. 45c

Tissue . . . . . 4 rolls 28c

Facial Tissue . 2 boxes 43c

Meat Pies . . . . 3 for 65c

## KUSTERER'S FOOD MARKET

DIAL GR 9-3331 WE DELIVER

## CAR-TUNES

AUTO SERVICE

AUTO DRIVING SCHOOL

"While I'm Waiting for My Fast Starting Student To Return, Could You Wax This Door?"

Nothing like seizing the opportunity to get some of our heads-up service. When (and if) the rest of the car gets back, we'll do a good job on that too.

## Alber Motor Sales, Inc.

Gulf Products - DeSoto - Plymouth - Valiant

295 SOUTH MAIN STREET CHELSEA, MICH.



## Community Calendar

Methodist Couples club Saturday, Nov. 12, 8 p.m., at Chelsea Lanes, M-92. Refreshments later at home of Mr. and Mrs. A. Fuiks.

Jaycees Auxiliary, Tuesday, Nov. 15, 8 p.m., at the home of Mrs. Homer Kuhl. Members reminded of Thanksgiving thought and Auxiliary Creed.

Short Hills Farm Bureau Thursday, Nov. 10, 8:30 p.m., at the home of Raymond Jacob, Jr.

Farmer's Guild Monday, Nov. 14, 8 p.m., at Lima Community Hall.

Chelsea Community Farm Bureau Friday, Nov. 11, at the home of Mrs. J. V. Burg home. Pot-luck supper, 7:15 p.m. Program: Pictures by Anton Nielsen. Committee: the Oscar Kadmbachs and Leon Sandersons.

Friendly club Monday, Nov. 14, 7:30 p.m., at the home of Mrs. Margaret Dietle. Co-hostess: Mrs. Elsie Paul.

VFW social meeting Monday, Nov. 14, 8 p.m., at the home of Mrs. Donald Parsons, 223 Lincoln. Committee: Alda Juergens, Florence O'Hara, Birdie Chaplin, Anna Stofor, Bernice Schneider.

St. Paul's Women's Guild circle meetings: Mission Circle, Tuesday, Nov. 15, 8 p.m., at the home of Mrs. Errol Jones; 6051 M-92; Christian Service, 2 p.m. Tuesday, Nov. 15, at church hall with hostesses, Dorothy Fisher and Lillian Keizer and members to bring articles for Christmas bazaar at Detroit Home for Aged and Children; Good Will Circle at church hall, Wednesday, Nov. 16, 1:30 p.m., to the quilts and make Christmas favors; Willing Workers postponed until 8 p.m. Wednesday, Nov. 30.

Morning Philathea Circle of the Methodist church will entertain the Afternoon Circle at 9 a.m. Wednesday, Nov. 16, at the church social center. Hostesses: Florence Steger, Marjorie Fisher. There will be no regular meeting of the Afternoon Circle this month.

Court of Honor, Troop 25, and family pot-luck dinner Monday, Nov. 14, 6:15 p.m., at the Congregational church. Families not solicited asked to bring salad or dessert to pass; milk for their children and own table service. Contact Mrs. Robert Foye for further information.

Chat 'n' Seau Tuesday, Nov. 15,

7:30 p.m., at the home of Mrs. William Geddes, Co-hostess: Mrs. O. H. Hinderer.

Lima Center Extension club Wednesday, Nov. 16, 11 a.m., at the home of Mrs. George Frey, singer. Notice changed date. Roll call: Christmas Suggestions.

PNG club Thursday, Nov. 18, 7:30 p.m., at the home of Mrs. M. L. Dietle. Co-hostess: Mrs. Anna McDonald.

Special convocation Olive Lodge No. 140, R.A.M., Friday, Nov. 11, 7:30 p.m. Royal Arch degree.

Past Matrons OES, Thursday, Nov. 10, 12:30 p.m., at the home of Mrs. Leora Noll. Pot-luck dinner.

Lyndon Extension club Thursday, Nov. 17, 12:30 p.m. at Lyndon Town Hall. Members to bring articles for silent auction. Guest meeting.

Mary-Martha Circle, Nov. 15, home of Mrs. Raymond Schairer, 50 Parker Rd., Dexter.

Now that you are cleaning up or out for Thanksgiving, how about giving any surplus or extras to Goodwill? Call Wesley Morrison at GR 9-1952 for pick-up on Nov. 15. adv.19

South Sylvan Extension club meeting postponed to Nov. 17, 8 p.m., at the home of Mrs. Henry Heim. Members to bring sewing supplies for making cancer pads.

St. Paul's Fidelity Circle Thursday, Nov. 17, 1:30 p.m., at the home of Betty Oesterle.

Jerusalem Home Extension club Tuesday, Nov. 15, 8 p.m., at the home of Mrs. Vergil Hines.

Rogers Corners Farm Bureau Friday, Nov. 11, 8 p.m., at the home of Mr. and Mrs. Earl Huohli.

Chelsea Suburbanettes Extension club Thursday, Nov. 10, 8 p.m., at the home of Mrs. Daryl Satterthwaite. Members to bring cake pan for cake decorating lesson.

OES Rummage sale, Masonic Temple, Friday, Saturday, Nov. 11-12, beginning 9 a.m. Contributions to be brought to hall Thursday afternoon, Nov. 10. For pickup phone GR 9-2521 or GR 9-0531. adv.19

## Ypsi Teacher Will Speak at PTA Meet

Mrs. Ingrid Yllo, supervising teacher in elementary schools of Lincoln Consolidated schools, Ypsilanti will be the guest speaker at the Chelsea PTA meeting scheduled for Wednesday, Nov. 16, at 8 p.m., in the cafeteria at Chelsea High school.

Her topic, "Purpose for Teaching Reading in American Culture," will include an explanation of the problems teachers face in teaching reading, as well as suggestions of ways in which parents can help children in learning to read.

Plans are being made for a program later in the school year on the topic, "Michigan School Costs." This is being promoted by 118 area PTA Councils to help Michigan citizens toward a better understanding of how their schools are financed.

Five regional workshops were recently conducted throughout the state to prepare for state-wide citizen discussions of school costs.

The Chelsea PTA president, David Soule; the PTA program chairman, the Rev. Philip Rusten; and School Superintendent Charles Cameron attended one of the workshop meetings which was held at Ypsilanti.

In preparation for the later PTA meeting when school costs will be the discussion topic, 12 Chelsea area citizens met at Chelsea High school Thursday evening and heard Ralph Gesler of the Division of Field Services of Michigan State University give an explanation of a specially prepared booklet entitled "Your Michigan School Costs."

## No Rate Hike Expected for Chelsea Calls

Dexter and Chelsea telephone customers may anticipate no increase in monthly rates if the proposal for toll-free service is established between the two villages, according to Dexter Chamber of Commerce spokesmen.

At a meeting held at the Island Lake Rd. home of Dexter Chamber of Commerce president, Leo G. Hoey, members of the C. of C. executive board reviewed the information supplied them by Nicholas Prakken, Michigan Bell Telephone Co. representative. Prakken had told C. of C. members at a previous meeting that rate increases occurred automatically at the 30,000 and 60,000 mark in telephone listings. From available facts and figures, board members concluded that neither Dexter nor Chelsea would exceed the 30,000 phone figures should the toll-free service between the two villages be set up. Chamber of Commerce members have had many replies to their request that both individuals and organizations respond stating whether or not they would support a move to ask telephone company officials to initiate the toll-free Dexter-Chelsea service. Prakken earlier verified the existence of a cable laid between the two communities.

Present facilities to Dexter telephone customers include toll-free service to both Ann Arbor and Pinckney.

Mrs. George W. Hart spent the week-end visiting relatives in Otawa, O.

When you think of bottled gas, think of SHELLANE—only a few pennies a day to use.

Shellane Bottled Gas is a product of the Shell Oil Company.

HILLTOP PLUMBING BOB SHEARS 201 S. Main St. Ph. GR 5-7201

## Telephone Service...

(Continued from page one)

able for approximately a six-month period, shortly after cable had been laid between Dexter and Chelsea, but that a shut-off switch had ended those two communities and that the majority of residents were not aware that any such service ever existed.

Prakken agreed that the cable had been installed at one time, but said more lines would likely be required to handle the telephone traffic should the Michigan Bell put Dexter and Chelsea on such a rate that calls between phones in each village would be included in the regular monthly rates.

Seeing this need might arise Chamber members queried Prakken on whether the general increase would not partially at least offset the outlay costs incurred.

Throughout the discussion at the October meeting, individual members stated the number of calls placed to friends in Ann Arbor for the purpose of relaying Chelsea messages thereby saving toll charges was probably unavailable, but according to local businessmen this occurs repeatedly.

Prakken expressed the fear of residents complaining about the small rate increase required should service between the communities be established. He said, "Perhaps this would be an advantage to those of you present tonight, but maybe there would be many residents of Dexter who, having no occasion to place calls to Chelsea at any time, might object strenuously and we have to consider the community as a whole."

Later discussion among people who had attended the meeting brought out the fact that "many Dexter and Pinckney people have no occasion to call each other, either, but toll-free service is available to them, just the same."

The Dexter Chamber of Commerce meeting which Prakken will attend for further discussion of the possibility of Dexter-Chelsea toll-free telephone service is to be held Nov. 22 in the Dexter Village Fire Hall and will begin at 8:30 p.m. Everyone in the Chelsea-Dexter area is urged to attend.

## BUSY BEAVERS 4-H CLUB

The October meeting of the Busy Beavers 4-H club was held at the home of Janet and Linda Prentice on Saturday, Oct. 29.

We had installation of officers at this meeting. They were as follows: president, Janet Prentice; vice-president, Sharon Myer; secretary, Diane Reynolds; treasurer, Terry Schoonover; reporter, Margie Myer; game committee, Ruth Ann Hannewald and Betty Tisch. A pot-luck lunch and games followed.

Margie Myer, reporter.

## Wrestling Show Set at Dexter School

All-star professional wrestling returns to Dexter on Friday night, Nov. 18, at the Dexter High school. Sponsored by the Junior class, the card will feature some of the biggest names in wrestling.

Leaping Larry Chene, the greatest box-office attraction in Michigan's ring history, will tangle with Ricki "The Crusher" Cortez in a match that should be a classic of violence and savagery.

The Crusher, hated by wrestling fans the world over, says that his greatest joy comes from punching and kicking an opponent until he is unable to get up. His philosophy is, "Everybody in this world has to look out for himself. I get suspicious any time somebody says that he's going to do a favor for me. I don't need anybody's help and nobody's going to get any help from me."

"Undoubtedly Cortez' attitude stems from his boyhood in the slums of Mexico City. Of his childhood, he remembers "I was hungry all the time." His meals consisted of whatever he could beg, borrow, or steal from his poverty-stricken neighbors.

An ex-Marine, Cortez served 13 months on the front lines in Korea. Towards the end of his hitch, his nerves stretched to the breaking point, Cortez actually slugged a sergeant who ordered him to go out on patrol for the second time in one week (a violation of regulations). Only his excellent fighting record saved The Crusher from a court-martial.

All Bey will meet Fearless Frank Shields in the other heavyweight bout.

Two top midget matmen will clash in the other single match, after which the winners of the first two matches will return against the losers in a mixed Australian tag-team bout.

BECKER MEMORIALS 6033 Jackson Road ANN ARBOR, MICHIGAN

## 32 Die on State Highways in Grim Halloween Week

Clipped by a ghastly pre-Halloween week-end which claimed 32 traffic deaths, Michigan's provisional October road toll soared to 101 to record the severest month for highway fatalities in the last two years, the State Police report.

Adding to the grimness in the probability that delayed deaths will push October's total above the recent monthly highs of 105 in November, 1955, and 109 in September, 1956. The previous worst October mark was in 1955 when 204 died.

The highway carnage on October's final week-end, which included 18 killed in five multiple death accidents, was one of the state's highest for a 64-hour non-holiday week-end. An earlier mark for a somewhat comparable period in the last five years was the full 72-hour non-holiday week-end in mid-August of 1955 when there were 46 deaths.

The October death toll of 101 is 30, or 28 per cent, more than 125 in the same month last year.

The provisional 10-month toll of 1,206 is 98, or 8.4 per cent, ahead of 1,108 fatalities in the corresponding 1959 period.

"The alarming October tragedies emphasize the increased traffic hazards during the last months of the year," said Commissioner Joseph A. Childs. "Reduced visibility and more adverse weather demand greater caution. Laws and law officers do all they can but in the final analysis it's up to each driver and pedestrian to drive and walk with increased care."

Chelsea Theatre CHELSEA, MICHIGAN THURS.-FRI.-SAT. NOV. 10-11-12 True Marine Epic of the South Pacific

Hell to Eternity Complete Shows at 7:00 - 9:10 p.m. SUN.-MON. NOV. 13-14 It's high time you had the high time of your life-time!

BING CROSBY FABIAN TUESDAY WELD NICOLE MAUREY LIVE TIME Matinee Sunday 3:00 cont.

Provisions for paid rest during regular working hours included in a fourth of a century major collective bargaining agreements in effect 1959 which were analyzed by U. S. Labor Department's Bureau of Labor Statistics.

HEAT DOLLAR FLY THROUGH "GONE FLAT" ATTIC INSULATION

UP TO 40% OF YOUR FUEL DOLLAR CAN BE WASTED THROUGH THE CEILING!

Stop This Waste Easily - Inexpensively

—INSTALL—

FIBREGLASS BLANKET

or MICA PELLETS

For as Little as \$5.50 per thousand sq. ft.

DIAL GR 5-3391

CHELSEA LUMBER CO

**Gambles**  
The Friendly Store

**HUNTERS!**  
GUNS and GEAR

CALLING ALL HUNTERS! SPORTSMEN! COLLECTORS! JUST ARRIVED! SENSATIONAL U.S. ARMY 30.06

Cost the Government \$100

**26<sup>95</sup>**

BUT ONLY

SPRINGFIELD-MAUSER "SPEEDLOCK" ACTION

PRECISION MICROMETER RECEIVER SIGHT

Target Practice Ammo (Box of 20) \$1.50

INSTALL A NEW BATTERY NOW AND BE SURE!

SILVER SEALED GRIDS—The Greatest Battery Improvement in Years!

**16<sup>95</sup>**

Gr. 245 Exchange

Plastic Separators

Hard Rubber Case

**NO MONEY DOWN!**

\*ALL VARCON BATTERIES are warranted on a pro-rata basis. You pay only for service obtained.

Replace that Old Battery at Gambles

**ALWAYS BETTER BUYS AT GAMBLES**

**THE SHOTGUN for DEER HUNTERS**

BROWNING AUTOMATIC-5

has plenty of FIRE-POWER!

5 SHOTS

AS FAST

AS YOU CAN PULL

THE TRIGGER

\$129<sup>75</sup>

U. S. Rubber Lightweight INSULATED BOOTS

12" high, light and rugged boot. Non-skid cleat sole.

\$11.95 pr.

HAND WARMERS

New self starting Jan-e hand warmer. Keeps you warm. Lights cigarettes, too.

\$3.95

COMPASSES

Marble's Pin-on Type \$3.75

Marble's Wrist Type \$3.50

Pyramid Pocket Type 65c

U. S. ROYAL Tempered Rubber OVERSHOES

4-buckle, heavy-duty overshoe. For rough wear.

\$8.95 pr.

Hunting Knives Priced from \$1.19

Red Suede Hunting Gaps - \$2.85

Red Buckskin, Fleece Lined Hunting Gloves \$2.75 pr.

**For the Finest Picture in Television SEE GE for 1961**

★ MORE "PULL-IN POWER" ★ BETTER "FRINGE-AREA" RECEPTION

★ GE'S FINEST PICTURE EVER!

**ALL 1961 MODELS HAVE:**

★ Full Power Transformer... Protects tubes and components. Reliable, consistent performance. Convection cooling directs heat up and away from critical parts. Increases component life.

★ New Picture Width Control... Compensates for changing line voltage. Corrects over extended or shrinking picture. Brighter, sharper viewing.

★ Up-Front Controls... Easier to see... easier to use.

★ New Set-Forget Volume Control... Pre-set volume level. Sound as you like it, every time.

★ New AGC Circuit (Automatic Gain Control)... Compensates for weak or strong signals. No need for an area switch.

★ New "Daylight Blue" Picture... Whiter, brighter, sharper contrast. More uniform focus... more picture power.

★ Front Sound Projection... Direct sound — TV to Listener. New audio circuitry cuts distortion.

★ Improved Deflection Yoke... Sharpens focus. Eliminates pin-cushion effect.

★ Horizontal and Vertical Blanking Circuits... "Blank Out" picture interference. Suppresses retracing lines.

★ Increased Sensitivity... Better fringe area reception. Greater amplification of weak signals.

★ Precision Crafted Circuitry... Dependability-assured wiring and connections.

**Prices Start at \$159<sup>95</sup>**

-- SHOP and SAVE at --

**FRIGID PRODUCTS**

113 North Main Street L. R. Heydlauff Phone GR 9-6651



## Jiffy Mix Cagers Win First Game

Chelsea Jiffy Mixers basketball team opened their season Wednesday, Nov. 3, at the Merrywood gymnasium, Ann Arbor, where they emerged with an 85-61 victory over their opponents, the Saline Merchants team.

"Coach Ode's Richardson said he was very pleased by the opening performance of his young, aggressive team."

The second game of the season, however, proved to be a heart-breaker for Chelsea. Played at the Federal Prison gymnasium at Milan, Saturday, the prison team clinched the game by scoring in the final 10 seconds of play for a 77-70 victory over the Jiffy Mixers.

In the Jiffy Mixers-Saline Merchants game, Chelsea took an early lead and kept increasing the lead as the game progressed. At half-time the score was 42-20.

In the third quarter Chelsea battled the Saline players by using a full-court press—a maneuver they had used so often during their high school days under Chelsea High school's coach, Bob Taylor.

Scoring was well distributed as all players saw action.

Jack Patrick, 20 points and his hard rebounding was a big factor in the game. Loren Koezer played a fine defensive game, rebounding well, and accounting for 10 points; and Frank Frederick was next with 18 points.

Frederick and Murphy sparkling on the defensive props, and Willie Heiligh giving an outstanding performance in rebounding, were other highlights. Murphy accounted for 15 points and Heiligh 11 points.

Playing Coach Richardson contributed the remaining points credited to Chelsea and kept the team hustling.

Jim Klobuchar and Don Wood also saw action, the entire team doing a notable job.

Saturday's game against M-FP was hard fought and close all the way, the decision coming in the closing seconds.

Loren Koezer was high scorer for the Jiffy Mixers, netting 28 points. Jack Patrick was next with 20 points.

The next game for the Jiffy Mixers is scheduled for Nov. 12 at Ann Arbor. The Ann Arbor Texans team will be the opposing team.

Members of the Jiffy Mixers team have gone on record with a vote of appreciation for uniforms contributed by Howard Holmes.



**NASSAU HOLIDAY** — Michigan members of the National Association of Postmasters of the United States pose for a photo at the Montague Beach Hotel during a holiday visit to Nassau, Bahamas. They are (left to right): Mr. and Mrs. Andrew Farnsworth of Holt; Carl J. Mayer of Chelsea; Miss Helen Martin of Indian River; Don Howell of Wayne; and Mrs. Mildred Freeman of 49 Highland, Detroit. Howell was in charge of the group's trip to this island paradise. Postmaster and Mrs. Mayer had attended the postmasters' convention at Miami Beach, Fla., Oct. 23-27 and were at Nassau Oct. 28 and 29. They visited later in Bradenton, Fla., where they were guests of Mrs. Mayer's aunt, Mrs. Walter Smith and Mrs. Charles Hartman. They returned home last Saturday.

## Four Injured In Sunday Auto Collision

Mrs. J. R. Altenberndt, of 251 Harrison St., sustained a broken collar bone; her husband sustained a knee injury; their 12-year-old son, William, suffered bruises and shock; and Roy D. Miller, 15775 Cavanaugh Lake Rd., received bruises and a cut on his nose when cars driven by Altenberndt and Miller were involved in a collision on Cavanaugh Lake Rd. Sunday afternoon.

According to Sheriff's Department reports the car driven by Altenberndt with his wife and son as passengers came over the crest of a hill and the collision occurred as Miller started a left-hand turn into his driveway.

Both cars were damaged. In a one-vehicle accident Wednesday night on M-92 near Boyce Rd., David Col. Jr., of Gregory, suffered bruises when the pick-up truck in which he was riding went out of control, skidded for some distance and hit a tree. The truck was demolished. The driver, Kenneth Johnson of Gregory, was unhurt.

**MYSTERY FARM NO. 123** — Originally to be the Roy Easton farm on Dancer Rd. The farm is now operated by Keith Bradbury.

## Roy Easton Farm on Dancer Road Now Operated by Keith Bradbury

Mr. and Mrs. Keith Bradbury and their son, Kevin, now live on the farm at 520 Dancer Rd., which is pictured in the Nov. 3 issue of the Standard as "Mystery Farm No. 123." The farm is owned by Mrs. Bradbury and Mrs. Clifford Bradbury.

The Bradburys have lived on the Easton Dancer Rd. farm the past five years. Prior to that Mr. and Mrs. Clarence Hinderer lived there for a number of years before moving to a farm near Dexter.

The Hinderer family included a daughter, Evelyn, now Mrs. Ross Ewon of Delhi Rd., Leon Hinderer, stationed with the U. S. Army in Germany, and two sons at home, Allen and Elwyn.

Ownership records show that the farm has been owned by members of the Easton family since it was purchased Nov. 15, 1885, by Alvin Easton, grandfather of Rhea Easton-Benedict, who with her husband, Graham, now owns the farm.

Ownership was transferred by her father, Roy Easton, in December, 1955.

Alvin Easton, father of Roy Easton, purchased the house and 80 acres of land in 1885 from Charles A. Guerin, who moved "out west." Alvin Easton farmed the 80 acres and on Nov. 5, 1890, purchased an additional 80 acres from Charles Thompson, making it the present 160-acre farm.

Alvin Easton was born Sept. 30, 1885 on the farm of his grand-

father, Paul Easton, at 0800 Easton Rd., now occupied by Jack Bradbury, an uncle of Keith Bradbury who operates the Dancer Rd. farm, known by area residents as the Easton farm (Mystery Farm No. 123). The grandparents came here in 1881 from Yates county, New York. Alvin's father was Leander Easton.

Upon the death of Alvin Easton the farm passed to his son, Roy. In 1935, and then in 1955 to Roy's daughter and her husband, Mr. and Mrs. Graham Benedict of Birmingham.

Readers who recognized the farm and called The Standard office include the men at Farmers Supply Co. and Bates Elevator Co.; also, Arthur Paul, Paul Rothfuss, Mrs. Walter Trinkle, Rita Parsons, Douglas Stark, Mrs. Keith Bradbury and Mr. and Mrs. Herbert Hinderer.

Ownership records show that the farm has been owned by members of the Easton family since it was purchased Nov. 15, 1885, by Alvin Easton, grandfather of Rhea Easton-Benedict, who with her husband, Graham, now owns the farm.

Ownership was transferred by her father, Roy Easton, in December, 1955.

Alvin Easton, father of Roy Easton, purchased the house and 80 acres of land in 1885 from Charles A. Guerin, who moved "out west." Alvin Easton farmed the 80 acres and on Nov. 5, 1890, purchased an additional 80 acres from Charles Thompson, making it the present 160-acre farm.

Alvin Easton was born Sept. 30, 1885 on the farm of his grand-

father, Paul Easton, at 0800 Easton Rd., now occupied by Jack Bradbury, an uncle of Keith Bradbury who operates the Dancer Rd. farm, known by area residents as the Easton farm (Mystery Farm No. 123). The grandparents came here in 1881 from Yates county, New York. Alvin's father was Leander Easton.

Upon the death of Alvin Easton the farm passed to his son, Roy. In 1935, and then in 1955 to Roy's daughter and her husband, Mr. and Mrs. Graham Benedict of Birmingham.

Readers who recognized the farm and called The Standard office include the men at Farmers Supply Co. and Bates Elevator Co.; also, Arthur Paul, Paul Rothfuss, Mrs. Walter Trinkle, Rita Parsons, Douglas Stark, Mrs. Keith Bradbury and Mr. and Mrs. Herbert Hinderer.

Ownership records show that the farm has been owned by members of the Easton family since it was purchased Nov. 15, 1885, by Alvin Easton, grandfather of Rhea Easton-Benedict, who with her husband, Graham, now owns the farm.

Ownership was transferred by her father, Roy Easton, in December, 1955.

Alvin Easton, father of Roy Easton, purchased the house and 80 acres of land in 1885 from Charles A. Guerin, who moved "out west." Alvin Easton farmed the 80 acres and on Nov. 5, 1890, purchased an additional 80 acres from Charles Thompson, making it the present 160-acre farm.

Alvin Easton was born Sept. 30, 1885 on the farm of his grand-

## Dan Maroney Named Local Insurance Agent

Dan Maroney has been appointed an agent for the Seaboard Fire and Marine Insurance Co. He will be writing automobile insurance.

A 1957 graduate of Michigan State University, he took a post-graduate extension course in insurance at MSU in 1959.



## Pontiac tailors body design to a new Wide-Track

Better balance and roadability! Control that can't be copied!

We've built more room and greater roadability into this sleek new '61 Pontiac. There's more headroom, legroom and footroom. Doors are wider and they're designed to open farther for greater convenience. By trimming side overhang, we balanced more weight directly between the wheels. The '61 Pontiac gives you greater stability. It gives you a greater sense of control for every mile, every maneuver. Isn't now the time to try the Wide-Track way to travel?

PONTIAC '61 - IT'S ALL PONTIAC!

SEE YOUR LOCAL AUTHORIZED PONTIAC DEALER

**HARPER SALES & SERVICE**  
118 W. MIDDLE STREET  
CHELSEA, MICH.

## HUNTERS

HERE'S YOUR CHECK LIST FOR COLD WEATHER HUNTING NEEDS

- ✓ Dacron Insulated Jacket and Pant (5 oz.) Red Plaid or Olive
- ✓ Duofold Insulated Underwear Union Suit or 2-Piece
- ✓ Healthknit Thermal Underwear
- ✓ Hooded Sweat Shirts
- ✓ Thermal or Dacron Insulated Sox
- ✓ Insulated Hoods, Wool Caps, etc.
- ✓ B. F. Goodrich Insulated Boots Leather Insulated Shoes, 8- and 10-inch

**Strieter's Men's Wear**  
"The Place To Go for Brands You Know"

Give them a steady diet of our famous enriched feeds and see how healthy they stay... how they thrive!

**FARMERS' SUPPLY CO.**  
ANTON NIELSEN - SEEDS, FEEDS, FERTILIZER  
DAIRY AND POULTRY EQUIPMENT  
ACROSS FR. M. DEPOT - PHONE GR 5-5511 CHELSEA

**INSULATION SAVES YOU MONEY**

Right now is the time to plan for your comfort through the cold winter months ahead. See us today for an estimate on insulating your home. Savings in fuel costs will pay for the complete job before you realize it.

**CLOSED WEEK OF NOV. 14-19**

Open - 7:30 a.m. to 5:30 p.m.

**Finkbeiner Lumber Co.**

Phone GR 9-3881  
On Old US-12 Just off S. Main St.

MARTIN STEINBACH, OWNER



Established 1871 **The Chelsea Standard** GR 5-3581  
 General Excellence Award by Mich. Press Ass'n., 1951-1953-1954-1959  
 Walter P. Leonard—Editor and Publisher

Published every Thursday morning at 300 North Main Street, Chelsea, Mich., and entered as second class matter at the postoffice at Chelsea, Mich., under the act of March 3, 1879.

Subscription Rates (Payable in Advance):  
 In Michigan: One Year \$3.00 Six Months \$1.75 Single Copies \$ .10  
 Outside Michigan: One Year \$4.00 Six Months \$2.25 Single Copies \$ .10  
 Service men or women, anywhere, 1 year \$3.00  
 RETURN POSTAGE GUARANTEED

## Problem of Attracting New Industry Is Responsibility of Entire Community

Communities in every part of the country are aggressively seeking new industry these days. This is part of a trend which has continued ever since World War II and it has resulted in the establishment of large manufacturing plants in many small communities in every part of the nation.

The president of one of the nation's largest firms was recently quoted in a national magazine on the subject of choosing new sites for moving or new industry. He said, among other things, that the deep South was out-hustling every other section of the country in its bid for industry.

Perhaps this is because the South needs it worse than other sections. Perhaps it is because of other reasons. Whatever the reasons, the Midwest, South and even our own community, are in the market for new plants, and some communities and states are offering all kinds of incentives to lure new industry.

Interestingly, the top man of the biggest industry-leasing firm in the country reveals that a community's attitude toward new industry is vitally important. The people must want new industry and the town must be a nice place in which to live.

The responsibility for bringing new industry to our community then is a broad one. And it entails obligations of social and civil responsibility that all citizens must consider. Racial incidents, or labor strife do far more harm than is immediately apparent. The cost of such unfortunate circumstances is felt, perhaps, for many years in the future.

## Hunting Accidents Continue To Take Their Annual Toll in Human Life

So far this Fall we have read of about a dozen hunting accidents. Undoubtedly there have been more. Early in October a young hunter killed his father, on a deer drive. He saw something move and shot into the bushes.

A few days later another hunter shot his hunting companion who had moved from his duck blind. And so it goes, across the nation, every Fall, as the hunting season gets underway.

Deer hunting seems to take the heaviest toll of human life but hunters are wounded and killed every season by "unloaded" guns, often in cars, and by accidents which are caused when one hunter falls or stumbles and shoots his companion.

Can these accidents be stopped? Probably not, entirely, of course, but perhaps by thinking about the dangers, and talking and writing about it, we hope we may make some sportsmen more conscious of the problem—and maybe even save an unnecessary death.

There is too much carelessness, especially among deer hunters, and it annually results in tragedy for the family of every hunter so heedlessly killed. Every hunter about to go into the woods should think about the possibility that he may become an unintentional killer in a moment of carelessness or playful fooling around.

Don't let it happen to you.

In an article on Henry Ford a biographer recently stated the following nostalgic facts: "In 1909 the Model T touring cars sold for \$850. The price went up to \$950 in 1910, but thereafter was reduced annually. By 1916 the Model T touring car sold for \$360 and the runabout for \$345. A stripped economy model retailed for as little as \$290." It should be added, however, that this was before Henry established his famous \$5 minimum daily wage... and a long, long time before Walter Reuther.

**BANK AUTO  
LOANS ARE  
BEST!**

PUT ON THE BRAKES before you choose any car financing plan. Compare the complete cost of other plans with a Bank Auto Loan. Then decide.

**3% NOW PAID ON ALL SAVINGS DEPOSITS**

**CHELSEA STATE BANK**

Member Federal Reserve System



Member Federal Deposit Insurance Corp.



## MICHIGAN MIRROR

By Elmer E. White, Secretary, Michigan Press Association

Just one of the multitude of items which would come before a Constitutional Convention, should one eventually be called, is the question of whether the Michigan legislature should be strengthened. And if so, how to go about it.

The question is worthy of consideration now even though the earliest a Con-Con could be called under present circumstances is next fall. And then only if voters approve proposal three on the Nov. 8 ballot; then vote in favor of a convention at the spring election next year and elect delegates at special primary and general elections.

Other issues expected to go before any Con-Con range from four-year terms for the governor and some other state officials to lotteries.

Roughly 20 propositions for proposed change in the Constitution, all aimed at making government smoother, more efficient or cheaper, have been seriously mentioned as subjects which should be considered.

No doubt there are many more. More power for the legislature might be one item less subject to partisan feeling and more apt to be discussed seriously on its merits than many others.

One chief reason it comes up is this:

In the past 50 years the size, power and scope of the executive, and to a lesser extent, the judicial, branches of the government have increased enormously. The legislative branch is still vested with the same power it had originally, namely, the making of laws. Even that has been limited.

Legislative hands are tied by the present constitution when it comes to certain situations. Sizeable funds are earmarked for schools and roads, etc., and authority is delegated to other sources. An outstanding example of the latter regards the Civil Service Commission which can raise wages of state employees regardless of the Legislature's desire.

These are situations the Constitutional Convention would review for possible change.

There is really no effective means for the legislature to de-

termine if the policies it establishes are producing intended results.

Only in its budgetary function, that is, the approval of money spent to administer the laws it makes, can the Legislature check on the execution of those laws.

One suggestion for strengthening the legislature calls for creation of a legislative auditor who would conduct performance audits which would supplement fiscal audits, now handled by the Auditor General.

Some people say the elected auditor general should be replaced by a similar officer appointed by and responsible to lawmakers.

Vaccination can protect a person from contracting influenza in about seven out of ten cases, the State Health Department reports.

Two shots given two to four weeks apart can provide protection for the current season only. Flu epidemics in the winter of 1957-58 and again in 1959-60 demonstrate that influenza can still be a major contributing cause of death, the Department said.

Thousands of flu-associated deaths might have been prevented through vaccination.

People over 65, pregnant women and persons suffering from heart, kidney or lung disease are most susceptible to severe cases of flu, and they are also most likely to die from it.

Unfortunately, reactions from the shots to prevent it are sometimes worse than the flu itself. The vaccine is made from flu virus which is grown in chicken embryos, so persons sensitive to eggs or egg products are the ones who are most likely to suffer a serious reaction to the shots, the Department said.

Periodic reports from the State Police on Michigan traffic safety continue to show drivers are behaving less safely this year than last.

Provisional figures, which are likely to go up when final reports and delayed deaths are tabulated, show 1,027 dead on highways in the first nine months of 1960. This is 5 per cent more than last year. Injuries were up 40 per cent.

## Uncle Lew from Lima Says:

DEAR MISTER EDITOR:

I've saw several items in the papers here lately that's got me worried, and mighty uneasy. A fellow named Joseph Campobasso that's a member of the State Board for licensing barbers in Massachusetts has warned the folks in that state that it's \$100 fine or 90 days in jail for a mother to cut her kid's hair on account of her not having a license.

Then a feller in Washington that had spent \$600 on his new car in the first 100 days painted a big lemon on the car. The dealer went to court and the Judge made the feller take it off.

In Georgia the Attorney General has ruled that a feller don't have to have a fishing license to fish in his own pond, but the piece said it was expected that the Georgia Supreme Court would overrule the Attorney General in the matter.

It looks like to me, Mister Editor, that in a few more years a feller won't have no personal liberty in this country. It's agin the idea of modern Government for a man to do anything anymore without some sort of tax on it. The next step is to make a feller get a license to dig fish bait, to catch fish in his own pond, and I predict he'll finally have to get a license to cook his own fish in his

own skillet.

We was talking about this matter at the country store Saturday night and Ed Doolittle allowed as how the only way a feller could keep from running afoul of all the rules, regulations, and taxes was to stay in bed all day. And Zeke Grubb said he kept this up long enough they'll put a tax on sleeping more'n six hours.

It's getting a heap later than we think in this business of perfecting our personal freedom. For instant, I'll bet ole Thomas Jefferson and George Washington never had a haircut except at home, and I was 16 year old afore I ever saw inside a barber shop.

I blame a heap of this stuff on the legal profession. About three-fourths of all our lawmakers is lawyers and they go in strong fer more laws and the more complicated they like 'em. I was reading not long ago where a jury setting on a case in Boston, after hearing the lawyers for the defense and prosecution argue fer four hours, and after being in deliberation six hours, sent out and ask the Judge who the defendant in the case was.

The first time you can get around to it, Mister Editor, I think it would be a public service fer you to write a editorial on the subject. Yours truly, Uncle Lew.

## Expect Deer Kill To Equal Last Year's

Lansing—Michigan's deer hunters, estimated at 405,000 strong, are expected to approach last fall's harvest of 115,000 whitetails, their second highest on record, during the state's regular Nov. 15-30 season and a special Dec. 1-8 season in an area of Allegan county.

Buck kill is expected to hit 69,000, the same as last year, while "any deer" kill should drop to 45,500 due to a cut in special permits.

Some 92,700 permits were mailed this week to hunters who may take one deer of any age or either sex in 85 food-shortage or crop-damage areas.

There are several new things the permit holder must remember. First of all, he must write in his name, address, and license number on the new tag portion of his permit before taking to the woods. The tag must remain attached to the permit until an antlerless deer is shot or it will not be considered valid.

Each successful "any deer" hunter will be required to punch out the date of kill and fasten this green, waterproof tag to the jaw gambrel (hook) of his deer along with the regular metal seal. Deer are to remain tagged until they are transported to the hunter's home or a processing plant.

Besides the tag, hunters will find something else added in northern Michigan since last fall; namely, about twice as many law enforcement men on duty. Drawing men from its various divisions, the Conservation Department will send 100 extra patrol units, affixed in the northern lower peninsula. Additional units will also be deployed before and during the season above the Straits.

Department game men will again be busy during and right after the season making traffic counts to measure kill and studying deer at roadside biological checking stations, locker plants, special study areas, Department headquarters, and hunting camps. Successful hunters are urged to stop at one of the Department's checking stations to aid deer research. Stations will be located at Standish, Sanford, Mt. Pleasant, Morley, White Cloud, the Straits of Mackinac and on Drummond, Bois Blanc, and Beaver Islands.

## Co-Op Nursery Council Observing Fifth Anniversary

Serving 430 families in this 1960-61 school year, the Huron Valley Council of Co-operative Nurseries is celebrating its fifth year of organization.

Adrian, Ann Arbor, Chelsea, Dixboro, Monroe, Saline, South Lyon, and Ypsilanti contain 13 co-operative nurseries with memberships ranging from 10 to 36 families each.

Twenty-two years ago in 1938 Mrs. Charles Barclay of Ann Arbor, now principal of Saline Elementary school, organized the first local parent co-operative school of children from 20 families. Mrs. F. W. Ouradnik of Ann Arbor, now principal of Eberwhite Elementary school in Ann Arbor, was the first teacher. Psychologist and advisor for that first group was Dr. Katharine Greene, who is now Marriage Counselor for Wayne county.

Other nurseries formed in the next few years soon found that similar administrative and teaching problems arose in each group. The teachers and the parent officers of the groups called upon each other from time to time for aid in solving particular problems.

Upon the stimulus of the first state-wide co-operative nursery conference in 1951 four nurseries in the Huron Valley (Ann Arbor, Eberwhite, Willow Run, and Ypsilanti) began to meet for the purpose of regularly exchanging information and giving mutual aid. "Goals have now been expanded to include parent and teacher guidance through workshops and publications distributed during the year," reports Mrs. Fred R. McDaniel of Ypsilanti, chairman of the Huron Valley Council of Co-operative Nurseries for 1960-61.

In this area persons interested in learning about the possible co-operative nursery facilities available may call Mrs. David Soule, 408 Dale St., Chelsea, who is membership chairman until January, 1961. After January Mrs. J. Vincent Burg, II, is to serve as membership chairman.

The teacher is Mrs. Raymond (Jane) Schairer. Preferred enrollment is 25 three- and four-year-olds.

The nursery classes are held Tuesday and Thursday mornings in the former Beach rural school on Chelsea-Dexter Rd.

The state of Tennessee is rich in minerals, its livestock and agricultural interests are varied and important, its lumber production is large, its commercial interests are assisted by reason of its navigable waters, especially the Mississippi river.

## FARMERS FOR TOP PRICES FOR YOUR LIVESTOCK Consign to the Howell Livestock Auction

We have buyers for all kinds of livestock. Sole every Monday at 2 p.m. Phone 1089 Howell For Any Information

## JUST REMINISCING

Items Taken from the Files of The Chelsea Standard

### 4 Years Ago...

Thursday, Nov. 11, 1957—Chelsea Spelling Service, Inc., described as a "resource for getting together the people who want to give and those who are in need for this season" opened its offices in the Village Council chambers today with Mrs. Louis Ham, in charge. Popular Mechanics magazine has included in its section featuring Christmas gift ideas, the Rub-Rub Art boards made by a Chelsea concern, Kleiser Corp.

In the 34 Years Ago column (Nov. 8, 1923), a number of Chelsea firms who were unable to attend the Michigan-Ulinois football game availed themselves of the radio-phone outfits of friends to keep in touch with the game.

14 Years Ago... Thursday, Nov. 21, 1946—At a joint meeting of the Women's auxiliary and Ladies' Aid Society of St. Paul's church plans were completed for the merger of the two societies. Officers of the new society to be known as Women's Guild of St. Paul's church were elected as follows: Mrs. Otto Lucht, president; Mrs. Martin Miller, vice-president; Mrs. Alvin Vail, secretary and Mrs. John Osterle, treasurer.

Chelsea High school wound up its 1946 football season Friday by defeating Manchester, 45-0. The Chelsea team record for the season is 194 points in nine games to 38 points for their opponents.

First Chelsea deer hunters to report success in bagging bucks on the first day of the season are Toivo Nihamaki and Earl Heim.

### 24 Years Ago...

Thursday, Nov. 8, 1937—H. S. Ohlmes, 50 years old, dentist of Chelsea, killing Co. instantly last Tuesday when he fell 70 feet down a storage tank at the mill.

Tuesday's election was a big slide for the Democrats headed by Franklin D. Roosevelt as president and John N. Garner as vice-president.

In the 24 Years Ago column (Nov. 7, 1912), the residence of James Speer is the first to have gas connected by the Gas Company. The Speers ever received 324 votes in township as compared to 300 Green.

Married Saturday at the Methodist church, Ann Arbor, Stokoe, a teacher in Chelsea and L. G. Palmer.

Mr. and Mrs. Paul F. K. returned Thursday from a moon trip to eastern states, including such points of interest as Washington, D. C., Philadelphia and New York City. They are residing in the home of Mrs. Morton on Jefferson St.

The state of Maine produces large potato crops, with second place in its agricultural list. The state's main manufacturing is cotton and woolen worsteds, boots and shoes.

## ATTENTION DEER HUNTERS

Before buying your supplies, see our stock selection of hunting knives, compasses, warmers, caps, gloves, coats and breeches.

We have your favorite brand of ammo, in popular calibers, also shot gun slugs and buck shot in 410, 20, 16 and 12 gauges.

GLOVES—Red buckskin lined. Very warm. Per pair \$2.99  
 WOOL SOCKS—Per pair \$1.00

See Our Soo Red Coats and Breeches

Deer Hunting Licenses Issued Here

## MERKEL BROS.

At your FORD DEALERS, of course. His USED CARS are inspected, reconditioned when necessary and road-tested. They're priced right, too!

Where in the world can I get a GOOD USED CAR I can trust?

**PALMER MOTOR SALES, INC.**  
 CHELSEA, MICHIGAN



# CONGRATULATIONS

## TO THE 1960

# CHELSEA BULLDOG

# FOOTBALL TEAM

★  
**WASHTENAW  
CONFERENCE  
CHAMPS**

1959 - 1960

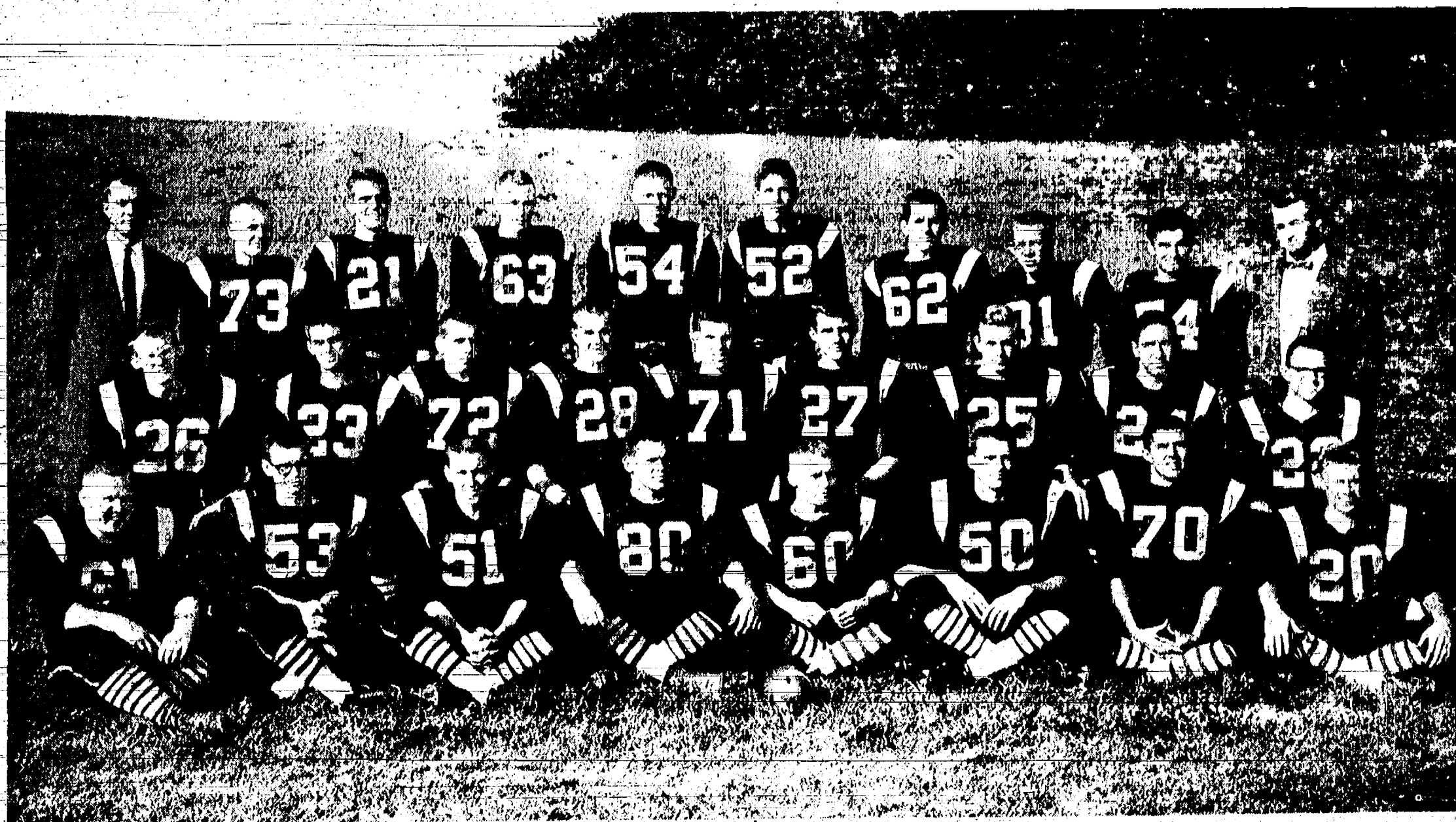
★  
**ROSTER**

(FRONT ROW)

Don Ellenwood	61
Richie Wood	53
Alton Nixon	51
Jerry Ringe	80
Danny Mayer	60
Homer Nixon	50
Charles Waller	70
Ed Louhon	20

(MIDDLE ROW)

Al Schauer	26
Larry Kramer	23
Ken Larson	72
Dave McLaughlin	28
Mike Marsh	71
Jim Maynard	27
Don Blalock	25
Daryl Keaser	24
Tom Dunlop	22



★  
**WASHTENAW  
CONFERENCE  
CHAMPS**

1959 - 1960

★  
**ROSTER**

(BACK ROW)

Alan Conklin	Head Coach
Tom Eisenbaiser	73
Dudley Holms	21
Robert Riemenschneider	63
Don Sexton	54
Don Brooks	52
Don Wilson	62
Stan Hand	81
Paul Schramm	74
Truman O'Doherty	Line Coach

Our congratulations to the Chelsea Bulldogs Football Team of 1960 for their splendid record and winning of the Washtenaw Conference championship for the second successive year. Our appreciation also goes to the coaches who helped make this feat possible. On this team are 16 Seniors who have played together for four years—Junior Varsity and Varsity—and have lost only two non-conference games in that time. What a record for these young men! The Chelsea area community praises you and is proud of you. Even though these 16 Seniors are completing their high school football careers, there is still plenty of talent left and we expect a winning team again next year!

*This Congratulatory Message Sponsored by the Following Chelsea Business Firms*

Alvin H. Pommerening, Real Estate Broker  
Minnie Scripter, Real Estate Broker  
Alber Motor Sales, DeSoto-Plymouth-Valiant  
Chelsea Implement Co., Inc.  
Palmer Motor Sales, Inc.  
Harper Sales & Service, Inc.  
Daniels Motor Sales, Inc., Buick & Olds  
Spaulding Chevrolet Sales & Service  
Balmer's Brake Service  
Wallace Wood, State Farm Insurance  
Foster's Men's Wear  
Parker's Cleaners  
Dillman Wahl, Sinclair Oil Agent

Park-Worden-Walz, Ohio Oil Agents  
Weber's Dairy Bar  
A. D. Mayer, Insurance  
Louie's Snack Bar  
Chelsea Restaurant  
Frank's Bar  
Seitz's Tavern  
Recreation Tavern  
Meabon's TV, Furniture & Appliance  
Stnieter's Men's Wear  
Anderson's  
The Pub  
Frigid Products

Paul Bollinger, Sanitation Services  
Farmers' Supply Co.  
Chelsea Associated Builders, Inc.  
Fitzsimmons Excavating  
Stop & Shop Supermarkets  
Chelsea Lanes, the Best in Bowling  
Wolverine Tavern  
Chelsea Hardware  
Gamble Store  
Merkel Bros., Hardware & Furniture  
Chelsea Lumber Co.  
Chelsea Drug Store  
Knoll's Ashland Service

Foor's Mobil Service  
Hankerd's Pure Oil Service Station  
Geo. Knickerbocker, Standard Oil Agent  
Rowe & Son, Plumbers  
The Chelsea Standard  
Brown's Welding  
Dottling's Marathon Service  
Kern Real Estate  
Winans Jewelry Store  
Schneider's Grocery  
Kusterer's Food Market  
Finkbeiner Lumber Co.  
Groxe's 5c to \$1.00 Stores  
Hilltop Plumbing



[illegible]

held, well at public auction to the  
bidder the premises and to the

per annum thereon with interest at  
legal rate and expenses, together  
said attorney's fee, allowed by the  
court, and any sum or sums payable  
by the undersigned, necessary to  
pay the interest in the premises to  
the Township of Wyandott County,  
Washington and State of Michigan,  
Lot 42, Washington Quarter No. 1  
of the northwest corner Section  
town 3 south, range 1 east, Twp.  
Township, Washington County, Wis-  
consin according to the plat thereof  
recorded in liber 14 of Plat, page  
Washington County Records.  
Dated: October 20, 1880.  
FEDERAL NATIONAL MOR...

HOOPER & BLASHFIELD  
Attorneys for Assignee

**MORTGAGE FORECLOSURE**  
Default having been made in the  
and conditions of a certain mortgage  
bearing therein a power-of-sale and  
Stephen D. Hale and Faye Hale,  
and wife, as mortgagors, to J. W.  
Barnes and Company, Inc., mortga-  
gorees, as Mortgages No. 1, 1958  
dated August 8, 1958 in Liber-  
ties, pages 42-44 Register of Deeds

thereafter assigned by the said mortgagor to Federal National Mortgage

tion, a National Mortgage  
which assignment is dated September  
1958 and recorded September 11, 1958  
under No. 440. Records, page 556 B  
of Branch 47, New-Haven County, Con-  
necticut, on which mortgage there is  
to be due on the date of the above  
principal and interest and other  
allowed by said mortgage the  
\$9,925.81, and an attorney's fee of  
\$150 provided for in said mortgage,  
to be paid by said mortgagee or  
its assigns, or proceeding at law before  
the court to recover the money  
owed by said mortgage or any part  
thereof.

Notice is hereby given that the  
power of sale contained in said  
mortgage, which upon default has become  
operative, and the statute in pro-

made and provided, on Friday, July 27, 1961, at ten o'clock in the forenoon, the undersigned will at the US-1

trance to the Washington County, Minn. City of Ann Arbor, Michigan, that belong to the place where the Court for the County of Washington, held, said at public auction to the highest bidder, the premises described in said mortgage, or so much thereof as may be necessary to pay the amount of said mortgage with interest at the annuum thereon to date of sale and legal costs and expenses, together with attorney's fee, allowed by law, also any sum of, or sums which may be due by this undersigned, necessary to pay the interest in said premises, and the Township of Yallanti County of Washington and State of Michigan, to wit Lot 345, except north-westerly

feet and southeasterly 6.18 feet  
of, Washtenaw Concourse No. 1  
part of the northeast quarter of

tion 3, and the northwest quarter  
Section 26, town 3 south, range 1  
Vandalia Township, Washtenaw Co.,  
Michigan, according to the plat  
thereof as recorded in Liber 111  
Plats, pages 21 and 22, Washtenaw  
County records.

**FEDERAL NATIONAL MORTGAGE  
ASSOCIATION**

Analysis of Mortgage  
Dated: October 27, 1980.  
**HOOPER & BLASHFIELD**  
Attorneys for Assignee of Mortgage  
Business Address:  
1018 First National Building  
Ann Arbor, Michigan  
Telephone: NO. 6482-2428

**MORTGAGE FORECLOSURE SALE**  
 —Default having been made in the

and conditions of a certain mortgage containing therein a power of sale and Verlon M. Keeter and Myrtle Keeter, wife, as Mortgagors; to James F. Keeter & Company, a Michigan corporation as Mortgagee, which mortgage is dated January 1888, and recorded - Vol. 106, Liber 890 of records of probate of the County of Leelanau Office, Western City of Michigan, and thereafter assigned by said mortgage to Federal National Life Association, a National Life Insurance Association; and which assignment is dated September 15, 1908 and assigned to the State of Michigan on October 17, 1908 in Liber 940 of Book page 583 records of probate of the County of Leelanau, Michigan, on which mortgage there is claimed to be due

date of this notice for principal  
 interest and other charges allowed

mortgage the sum of \$75.00 as provided by the terms of the mortgage, and at such time as the mortgagee may require, at law having been instituted to recover the money secured by said mortgage any part thereof.

Notice is hereby given that by virtue of the power of sale contained in the mortgage, which said mortgage is now operative, notice of sale, on Friday, June 10, 1961, at ten o'clock in the forenoon, of the premises and of the terms of the undersigned will, at the same time and place to the Waukegan County Court, for the City of Ann Arbor, Michigan, at the County of Waukegan, Illinois, that being the place where the Court, for public auction to the highest bidder, sell the premises described in the mortgage.

mortgage, or so much thereof as may be necessary to pay the amount of the

The exact 22 feet of lot 48 and west 1/4 of lot 49 Washington course No. 1 part of the Section 36 Township 37 North Range 7 East, Yelland Tarrant Washington County, Michigan, according to the plat thereon as recorded under Liber 14 of Plats, pages 11 and 12 of the Record.

Wash. Nat. Fed. Nat. Assoc.

Dated: October 23, 1960  
**HOOPER & BLASHFIELD**  
 Attorneys for Assignee of Mortgage  
 Business Address:  
 1003-8 First National Building  
 Ann Arbor, Michigan  
 Telephone: NO:mahdy 2-4614  
 Oct. 27, 1960

---

**JUST FILTERS**  
 16x20x1  
 16x25x1

16x25x1

**ARRELL  
METAL**

STREET - CHIL  
1 2 0011

WOOD 9-2011



stand  
stoop  
sit

it won't ride up!

# playtex girdle

with new cool cotton lining

You can bend, stretch, stoop, sit. Your Playtex Girdle won't ride up because it stretches seven different ways. Now every Playtex Girdle has soft, cool, cotton lining for all-day comfort. Try the new Playtex Girdle and enjoy the perfect-figure control and perfect freedom that only Playtex with seven-way stretch can give.

- Playtex Living Girdle Girdle or panty girdle \$6.95 XL (girdle only) \$7.95
- Playtex Magic Controller Girdle or panty girdle \$8.95 XL \$9.95
- Playtex Mold 'n Hold Zipper Girdle: girdle or panty girdle \$10.95 XL (girdle only) \$11.95

Please send me the following Playtex girdles.

	style	size	large	extra large
living girdle		waist hips		
magic controller		waist hips		
mold 'n hold		waist hips		
name	X large waist 38-40, hips 44-46			
address	please print			
<input type="checkbox"/> check <input type="checkbox"/> money order <input type="checkbox"/> charge <input type="checkbox"/> c.o.d. Order by International Mail Late orders subject to delay.				

## Patty Ann Shoppe



# CHELSEA VILLAGE COUNCIL PROCEEDINGS

Council Room  
Oct. 18, 1960  
Regular Session.  
Invocation by Mr. Sutton, Pastor of the Assembly of God Church.  
This meeting was called to order by Trustee Albert at 8:00 p.m.  
Trustees present: Barr, Baldwin, Chandler, Clark, Lixey and Paul. The minutes of the regular session of Oct. 4, 1960 were read and approved.  
A discussion was held regarding the proposed street decorations for the Christmas Season. The details are to be taken care of by the Chelsea Chamber of Commerce.  
A discussion was held regarding the storm and sanitary sewer program being accomplished at the present time. The 24-inch storm sewer being constructed on East Street will relieve the flooding conditions prevalent in the Park Street and Parking Lot entrance to the East Street.  
A discussion was held regarding the present Village Peddlers regulation.

Ordinance No. 41 adopted October 2, 1944. The reason and necessity for the Ordinance is to eliminate the abuses caused by many unrelatable parties engaged in fraudulent sales, in which there are many instances of no delivery, or if delivery, gross misrepresentation in quality.  
In the past year and one half with the help of many of the village residents, who call when they are approached by door to door salesmen, the Police Department has been able to keep the undesirable solicitors and canvassers at a bare minimum, but for all those apprehended, there is always one more to take their place.  
The residents of the Village of Chelsea are urged to call without delay your Police Department, if you are approached by a door to door salesman who cannot on your request, show a permit that has been issued to that particular person by the Village Clerk. The purpose of the Village Ordinances is not to keep legitimate establishments from doing business in the Village, but is intended to protect the residents from being victimized by unreliable parties.  
A discussion was held regarding the proposed lift station at the corner of Old US-12 and M-92. No official action was taken at this time.  
A discussion was held regarding the dedication of the Municipal Parking Lot to be held on Thursday Evening Oct. 27, 1960. Details are to be listed in the Chelsea Standard.  
Motion by Chandler, supported by Barr, to adjourn. Yeas—all. Carried.  
Approved: Nov. 1, 1960.  
Donald Alber, president.  
George Winans, clerk.

**NOTICE**  
**KRAFTY PRODUCTS**  
**Upholstering Co.**  
announces their new location  
425 N. MAIN ST.  
GREGORY, MICH.  
Temporary headquarters during construction of our new building, will be in my home at the same address.  
Savings up to 40% on rebuilding, restyling and reupholstering furniture.  
A SHORT DRIVE TO GREGORY IS A BIG SAVINGS TO YOU!  
Phone ALpine 6-2800

**If You Plan To Build or Remodel Your Home**  
**Call Us for . . .**  
**FREE ESTIMATES OR BIDS**  
— on —  
**PLUMBING, WIRING and HEATING**  
All Work Guaranteed with 1 Year Free Service  
**WE SELL FOR LESS - WE WILL SAVE YOU MONEY**  
Hours: Daily, 8-5:30; Friday, 8 a.m. to 8 p.m.  
EMERGENCY SERVICE CALLS: GR 5-8175  
**HILLTOP PLUMBING, HEATING & ELECTRICAL CONTRACTORS**  
201 SOUTH MAIN STREET  
Phone GR 5-7201 Chelsea, Mich.

**NEW 16 OZ. BOTTLE**

**GET 1/3 MORE**

16 ounces at the same price as 12 ounces of other fine beers

**Champagne Velvet**

for the Good Life

**JACK SMITH BEVERAGES, INC.**

The Atlantic Brewing Co., Chicago, Illinois

# The Way the Ball Bounces

With Tom Johnston

Well, the Bulldogs again claimed an undisputed Washtenaw Conference football title. Chelsea just had too much power for the rest of the league this fall, and the Chelsea team that closed the season, certainly must be considered as one of the very best in the entire state of Michigan. The club had good balance, and showed plenty of desire.

Dexter finished third in the loop standings, losing only to Chelsea and to University High. This should give that community a great deal of pride in the team, and in the fine job done by Al Ritt in his first year as a head coach.

This week, we'll be making the selections for our WOIA All-Area football team. I'd like to have any of you who have a nomination to be brought up to our coaches board to send that name to me, Tom Johnston, at WOIA, Saline, please do it today, because the decisions will be made by the time you read this column next week.

Bump Elliott and his Wolverine staff did a fine job in preparing the Wolverines for their game with Illinois last Saturday. The Michigan team showed the desire to win, and win they did. Michigan should have little trouble with Indiana this week, and should go into the Ohio State game in excellent physical and mental condition.

Believe it or not, the basketball season will be getting underway in just a few weeks. In fact, practice is starting at most of the area high schools.

In the Washtenaw Conference, we can look forward to another great conference race, with Chelsea, U. High and Saline again battling it out for the title.

Once again, WOIA will be broadcasting the high school game of the week that has become so popular with the fans and of course Coaches Comments will continue. This Saturday by the way, we'll be having a Salute to Champions program Saturday morning, with coaches and members of the championship teams in the area.

A year ago the Gophers of Minnesota were in last place in the Big Ten Conference and Coach Murray Warmath was hanged in effigy.

Now, it's a different story. Minnesota is ranked No. 1 in the land and unbeaten in a half dozen games.

What makes a team do a turnaround the way Minnesota did?

For one thing, the 1959 edition was manned by Sophomores and a few upper classmen who were getting their first taste of Big Ten action.

The youthful Gophers actually performed well, losing games in the late minutes on bad breaks or poor maneuvers because of inexperience.

To a couple of backs on the team it's beginning to seem like old high school days.

Sophomore Halfback Bill Munsey and Quarterback Sandy Stephens hail from Unlontown, Pa., where they paced the local school to football glory a few seasons back.

Now they are trying to do the same for Minnesota as the Gophers try to rub off the tarnish of several poor campaigns.

Together Stephens and Munsey make up half the Gopher backfield which has struck fear into opposing Big Ten linemen this season.

Stephens is a junior, who is living up to advance notices and is giving Gopher fans new hope.

Munsey made the first team by intercepting a pass for a touchdown against Nebraska in the opener. He was also a standout on defense.

Warmath quickly recognized the class of the spirited 19-year-old and moved him into the starting lineup over a veteran senior.

Munsey and Stephens add up to a lot of running power, and Warmath uses their particular abilities to the best advantage.

Munsey is the fastest of the Gopher backs and poses the greatest threat in a wide open situation.

Stephens has good speed, but his forte is a shifty, tricky style of running that leaves defenders sprawled in his path.

Stephens is also 10 years old. Both are six-feet tall and weigh around 200 pounds.

Both can use their height to pick up a couple of needed yards on a power play or pile-up yardage on a quick opener.

Munsey was on Unlontown High school's unbeaten grid team in 1957 while Stephens is listed as "one of the greatest football players" in the school's history.

It was Stephens who interested Munsey in enrolling at Minnesota. Munsey says he hasn't been disappointed. "You find the best brand of football in the Big Ten . . . that's why I wanted to play in the conference and that's why I like it here."



JOHN D. PELTON

# Livingston District Scout Executive Appointment Told

Joe A. Juncker, executive of Portage Trails Boy Scout Council, has announced that John D. Pelton, 27, of Milwaukee, Wis., has been named district executive of the Livingston district, effective Dec. 1.

He replaces James G. Stevenson, who resigned Sept. 16 to become district executive for the Thatcher Woods Council of Oak Park, Ill.

Pelton will also be the administrator of the Bruin Lake Boy Scout Camp, Juncker said, adding that Pelton and his family will live in Howell.

Pelton has been assistant district Scout executive for the Milwaukee County Council and is a U. S. Air Force Veteran, having been in the service from January, 1955, until February, 1957.

He attended Wisconsin State College in Milwaukee and trained at the 195th National Training School for Scout executives in Mendham, N. J.

**BOTTLED and HEATING GAS SERVICE**

**FLAMEGAS**  
SERVES AMERICA

★ SAFE  
★ CLEAN  
★ DEPENDABLE

**Worden's Flamegas**  
4221 Cedar Lake Drive  
Phone GR 9-5961

**Flamegas Ypsilanti**  
5025 Carpenter Road (US-23)  
Phone Ypsilanti HU 2-4522

**TRANSIT-MIX CONCRETE**

Finest quality concrete made to your specifications in our new automatic plant and delivered to your job location.

A fleet of 6 modern transit-mix trucks assures you of prompt delivery anywhere in the area.

**PROMPT DELIVERY**

STONES: 1 1/2", 1", 3/4", 1/2", 3/8" — 2NS SAND

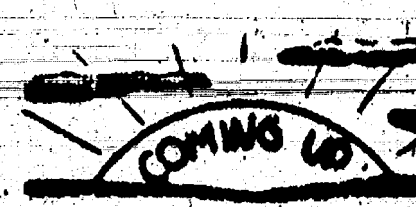
**KLUMPP BROS. GRAVEL CO.**

Phone Chelsea GR 9-2712  
4950 Loveland Road Grass Lake, Mich.

# The Hi-Light

Edited by Students of the Chelsea High School Journalism Club

Co-Editors: Barbara Irwin - Nancy McCalla



Nov. 11 - Sophomore-Freshman

Nov. 18-19 - Senior Play: "The Diary of Anne, Frank"

The newly formed Future Nurses Association, with Mr. George Bergman as advisor, elected as its officers: president, Pat Carter; vice-president, Harriet McCallum; secretary, Tassy Cavadas; and treasurer, Leslie Baxter. Donna Sherman and Leslie Baxter were chosen delegates for the District Council to be held here Nov. 28.

Now that football season is over, the Junior Varsity and Varsity cheerleaders are busy getting their basketball cheers into order. New sweaters have been ordered for junior varsity, who hope enthusiastically that they will arrive in time for season's opening.

Ann Schmunk, Diane Hayes, Donna Snyder, Ava MacDougall, and Mary Ann Hanson will be attending "Scholarship day" on Saturday, Nov. 12, at Michigan State University. Those top honor students who might be interested in competing for scholarships are invited to visit the campus, where they will visit those areas of special interest to them. Mr. Bergman is in charge of arrangements.

Members of Girls Athletic Association have recently been busy on their latest money-making project, the sale of rah-rah sticks, which are blue and gold pom-pom sticks attached to a stick. Sale has been progressing very well. The sticks are a fine way of showing school spirit. The group is revising its constitution to include a new point system. A "Fun Night" is planned for Monday, Nov. 14.

Student Council has been selling blue and gold Chelsea High Bulldog pins as one of their projects for the year. They accepted the plan from the Journalism club for a dance to be held on Dec. 17. Paula Romine and David Lixey are appointed to investigate the

possibility and desirability of a talent show.

The Chelsea Council was host to the Washtenaw Student Council on the morning of Nov. 8. They met in the library, and stayed for lunch in the teacher's dining room of the cafeteria.

The Camera club has divided into groups. Mr. Slater is teaching his group how to "compose" and take pictures. Mr. Hunter is teaching how to develop the film. When these processes are completed, the instructors would like to have other groups come in and repeat the process, thus enlarging the informed groups.

The High School Chorus, under the direction of Mr. David Sanborn, has been diligently preparing for their Christmas Concert on Nov. 30. Fifteen girls are trying out for 12 positions on the Chorus, which is a special harmonious section of the main chorus. This year's program shows all signs of being equal to or better than the usual Christmas concert, as it will include a wide variety of selections ranging from comical to serious. They will sing such religious songs as "Break Forth, O Beauteous Heavenly Light," "All People That on Earth Do Dwell," and "Ave Maria." The well-known "Joshua Fit the Battle of Jericho," the light-hearted "Story of a Tack," and selections from the Broadway hit "Carousel" will also be sung at that time. The choices should meet the general approval of all who come to this concert.

The Future Teachers' Association has been waiting patiently for a day nice enough so that a group picture may be taken. So far they have encountered rain, fog and overcast skies to prevent this. The picture will be published in a nation-wide FFA magazine. Chelsea can well be proud of its Future Teachers.

The first-year art classes have been experimenting with the different effects to be obtained from water colors. Each member of the class has decided on a scene to be painted and is beginning to paint his final picture. . . . the second-year classes have divided up into groups of four and five, and are working on Mardi Gras masks

made from paper mache and chicken wire.  
Sophomores have been practicing energetically for the entertainment at the Sophomore-Freshman dance, Nov. 11. Participating in a skit under the direction of Mrs. LaGoe are Carol McCalla, Nancy Fairbrother, Lorretta Wahl, Drucilla Pikelisier, and Kathryn Wengron. Virginia LeVan is practicing a duet with Mrs. Hunter, who plays the guitar. Leslie Baxter, Dot Martin, Cacapan, McCarthy, and Dot Fant are perfecting a Russian dance.  
They are also rehearsing in the reception of their individual pictures; and are working on a candy sale, samples of which were distributed to each sophomore at the last class meeting.  
In world history, with Mr. Prinsing, they are studying religions of the world. Perpendicular lines and triangles are being studied in geometry. Mrs. Shary's English students are diagramming, while Mrs. LaGoe's students are writing themes.  
Home economics classes are still divided into sewing and food groups and are working on specific projects. The sewing group has advanced to cutting and fitting their patterns. The food group is preparing breakfast foods as toast and cocoa. . . . See year home-makers are involved choosing patterns for their dresses, or jackets. Home-makers the third-year have been working on dinners and the complete meals.

Telephone Your Club News To GR 5-3581

Let a reputation of Honesty and Integrity be the guide to your next auto purchase.

SEE  
**DAVE ATKINSON**  
at  
**Chelsea Implement**  
COMPANY  
Phone GR 5-0111

**SERVICE Is Our Business**

**HAVE YOU CHECKED OUR EQUIPMENT DEPARTMENT?**

**SPEEDY CORN CRIBS—Bar Lock Construction**

**PAX HOG FEEDERS—Any Size**

**PAX ELECTRIC WATER FOUNTAINS**

**NELSON ELECTRIC WATER BOWLS—\$39.95**

**ALUMINUM ELEVATORS, 16-ft.—\$169.60**

**ALUMINUM SHOVELS—only \$6.40**

**CHICKEN FEEDERS - HOG TROUGHS BARREL TYPE FEEDERS**

**BLAESS Elevator Co.**

Phone GR 9-6511 Chelsea, Mich.

**SEE THE NEW VALUE-PACKED COMET 1961**  
**...THE BETTER COMPACT CAR**

**ONLY COMPACT WITH FINE-CAR STYLING**

**PRICED WITH OR BELOW THE COMPACTS OF OTHER MAKERS**

**FIRST FAMILY-SIZE COMPACT**

The first family-size compact Comet's 114" wheelbase (longer than any other compact) provides spacious comfort other compacts sacrifice. There is room for six grownups and a family-size load of luggage besides.

Big-car ride—small-car handling. The refined suspension (plus the 114" wheelbase) makes Comet's ride steadier and smoother than many standard cars. And you'll find that Comet turns, parks and handles almost as easily as a baby carriage.

Priced with or below compacts of other makers. For all its fine-car flair, family size, big-car ride and value features, Comet's priced with or below compacts of other makers.

New Thrift Power 170 engine for '61. Comet now offers two economy engines—the standard Thrift Power Six plus the new optional Thrift Power 170, for 11% faster highway passing, 22% better acceleration on hills.

**One-year or 12,000-mile warranty** Every 1961 Comet part (except tires, for which appropriate adjustments are made by their makers) is now warranted by dealers against defects in material and workmanship for one year or 12,000 miles, whichever comes first. Normal maintenance services and parts such as filters, spark plugs, and ignition points are excepted.

**Comet**  
the better compact car

SEE THE VALUE-PACKED COMET AT YOUR MERCURY-COMET DEALER

**CHELSEA IMPLEMENT COMPANY, INC.**  
3231 Manchester Road  
Chelsea, Mich.